

NEW YORK 13 OCTOBER 2018

RARE

DOMAINE DE LA ROMANÉE-CONTI

FROM THE PERSONAL CELLAR OF

Robert Drouhin

Sotheby's EST. 1744 Wine



AL

MAISON FONDÉE EN 1949

MAISON

MAISON CELLIERS DES



RARE
DOMAINE DE LA ROMANÉE-CONTI

FROM THE PERSONAL CELLAR OF

Robert Drouhin

AUCTION IN NEW YORK
13 OCTOBER 2018
10:00 AM
SALE N09921

1334 York Avenue
New York, NY 10021
+1 212 606 7000
sothebys.com

FOLLOW US @SOTHEBYS
#SOTHEBYSWINE

Please note effective July 1st the buyer's premium is 24% for Sotheby's Wine Auctions in New York.

Due to the nature of the wine in this sale, Sotheby's will be unable to ship any wine outside of the New York local area. Wines will be available for collection and we will be delighted to assist in helping making arrangements via third party carrier. Due to the fragile nature of old wines, we strongly recommend air shipment for delivery. Please note, Sotheby's will not be liable for any cork failure during shipment.

Sotheby's EST. 1744 **Wine**

INTERNATIONAL DEPARTMENTS

For a full listing of our offices and salerooms worldwide with detailed information on all of Sotheby's services, visit sothebys.com

WINE WORLDWIDE

Serena Sutcliffe, M.W.
Honorary Chairman,

Jamie Ritchie
Worldwide Head

Emma Paleschi
Worldwide Commercial Director

Toshihide Hokari
Worldwide Operations

NEW YORK

AUCTION

Connor Kriegel
Head of Auction Sales

Paul Tortora
Vice President

Richard Young
Vice President

Jackie Perrotta
+1 212 606 7050

RETAIL

Sacha Austin
Vice President

Nicholas Jackson
Vice President

Pierre-Antoine Bollet
Assistant Vice President

Graham Tucker
Katherine Montgomery
+1 212 894 1990

ADVISORY SERVICES

Julia Gilbert
Vice President

Yassmin Dever
+1 212 606 7050

HONG KONG

Adam Bilbey
*Head of Sotheby's
Wine, Asia*

AUCTION

Michelle Chan
Head of Auction Sales

Paul Wong
Deputy Director

Kent Law
Specialist

Anna Tam
+852 2822 8174

RETAIL

Victor Rabot
Vivian Liang
Lucien Michel
Howard Lee
+852 2886 7888

LONDON

Stephen Mould
Senior Director

James Reed
Director

Damian Tillson
Director

Claire Collini
Director

Frédéric Guyot du Repaire
Director

Caroline Shepherd
Deputy Director

Hugh Machin
Finn Schauer
+44 (0)20 7293 6423

LOS ANGELES

Ann Colgin
Consultant
+1 310 274 0340

SAO PAULO

Katia Mindlin Leite-Barbosa
Senior Vice President
+1 55 21 2553 1946

MEXICO CITY

Lulu Creel
Senior Vice President
+1 52 55 281 2100

AMSTERDAM

Albertine Verlinde
+31 20 550 2244

GENEVA

Emily Black
+41 22 908 4811

PARIS

Caroline Bessière
+33 1 53 05 52 84

FORTHCOMING AUCTIONS

A comprehensive calendar of international auctions, in addition to all sale results, can be viewed at sothebys.com

NEW YORK

FINEST & RAREST WINES
13 October 2018

THE CELLAR OF JAMES H. CLARK, PART III
10 November 2018

FINEST & RAREST WINES
1 December 2018

LONDON

THE COLLECTION OF PERFECTION
19 September 2018

FINEST & RAREST WINES
19 September 2018

FINEST & RAREST WINES
17 October 2018

FINEST & RAREST WINES
14 November 2018

HONG KONG

THE TOWERING BORDEAUX COLLECTION
29 September 2018

THE WONDERFUL CELLAR OF AN IMPORTANT ASIAN COLLECTOR
29 September 2018

FINEST & RAREST WINES
30 September 2018

BEIJING

Lei Tang
+86 10 6408 8233

JAKARTA

Jasmine Prasetio
+62 21 5797 3603

SHANGHAI

Rachel Shen
+86 21 6288 7500

SINGAPORE

Catherine Kee
+65 6732 8239

TAIPEI

Kelly Chen
Claire Liao
+886 2 2757 6689

THAILAND

Wannida Saetio
+66 2 286 0788

Important Notice Please note that all lots are sold subject to our Conditions of Sale and Terms of Guarantee, which are set forth at the back of this catalogue. As stated in the Conditions of Sale, all lots are sold on an "AS IS" basis. Prospective bidders should review the Conditions of Sale, Terms of Guarantee and the Buying at Auction section of this catalogue. Please see the back of this catalogue for further notices.

SOTHEBY'S, INC. LICENSE NO. 1216058. © SOTHEBY'S, INC. 2018

Sotheby's EST. 1744 **Wine**

LIQUOR LICENSE NUMBER 1046028

WINE AUCTION PERMIT NUMBER 385992

SPECIALISTS AND AUCTION ENQUIRIES

For further information on lots in this auction please contact any of the specialists listed below.

WORLDWIDE



SERENA SUTCLIFFE, M.W.
HONORARY CHAIRMAN,
SOTHEBY'S WINE
+44 (0)20 7293 6423
serenasutcliffe.consultant
@sothebys.com



JAMIE RITCHIE
WORLDWIDE HEAD
SOTHEBY'S WINE
+1 212 606 7865
jamie.ritchie@sothebys.com

AUCTION



CONNOR KRIEDEL
HEAD OF AUCTION SALES
+1 212 606 7050
connor.kriegel@sothebys.com

SALE NUMBER
NO9921 "RD"

BIDS DEPARTMENT
+1 212 606 7414
FAX +1 212 606 7016
bids.newyork@sothebys.com

SALE ADMINISTRATOR
Jackie Perrotta
jackie.perrotta@sothebys.com
+1 212 606 7050
FAX +1 212 606 7880

SWITCHBOARD AND
GENERAL INFORMATION
+1 212 606 7000
or visit sothebys.com

POST SALE SERVICES
Gabriela Bonilla
Post Sale Manager
Winepostsaleservices.ny
@sothebys.com
+1 212 606 7059

CATALOGUE PRICE
\$45 at the gallery

FOR SUBSCRIPTIONS CALL
+1 212 606 7000 USA
+44 (0)20 7293 5000
for UK & Europe

SOTHEBY'S WORLDWIDE
WEB SITE
sothebys.com/wine



PAUL TORTORA
VICE PRESIDENT
+1 212 606 7050
paul.tortora@sothebys.com



RICHARD YOUNG
VICE PRESIDENT
+1 212 606 7050
richard.young@sothebys.com

ADVISORY SERVICES



JULIA GILBERT
VICE PRESIDENT
+1 212 606 7050
julia.gilbert@sothebys.com



YASSMIN DEVER
+1 212 606 7050
yassmin.dever@sothebys.com

RETAIL



SACHA AUSTIN
VICE PRESIDENT
+1 212 894 1990
sacha.cabral@sothebys.com



NICHOLAS JACKSON
VICE PRESIDENT
+1 212 894 1990
nicholas.jackson@sothebys.com



PIERRE-ANTOINE BOLLET
ASSISTANT VICE PRESIDENT
+1 212 894 1990
pierre-antoine.bollet
@sothebys.com



GRAHAM TUCKER
+1 212 894 1990
graham.tucker@sothebys.com

Sotheby's is pleased to offer shipping via temperature-controlled ocean container to Hong Kong.
For more information please see page 153.



SOCIÉTÉ CIVILE DU DOMAINE DE LA ROMANÉE-CONTI
PROPRIÉTAIRE A VOSNE-ROMANÉE (COTE-D'OR)

SOCIÉTÉ CIVILE DU DOMAINE DE LA ROMANÉE-CONTI
PROPRIÉTAIRE A VOSNE-ROMANÉE (COTE-D'OR)

SOCIÉTÉ CIVILE DU DOMAINE DE LA ROMANÉE-CONTI
PROPRIÉTAIRE A VOSNE-ROMANÉE (COTE-D'OR)

RICHEBOURG

RICHEBOURG

RICHEBOURG

APPELLATION . RICHESOURG . CONTRÔLÉE

APPELLATION . RICHESOURG . CONTRÔLÉE

APPELLATION . RICHESOURG . CONTRÔLÉE

ANNÉE 1952

ANNÉE 1952

ANNÉE 1952

Mise en Bouteille au

Mise en Bouteille au Domaine

Mise en Bouteille au

75

114812 2 8/05

CONTENTS

3	AUCTION INFORMATION
4	INTERNATIONAL DEPARTMENTS
5	SPECIALISTS AND AUCTION ENQUIRIES
8	RARE DOMAINE DE LA ROMANÉE-CONTI FROM THE PERSONAL CELLAR OF ROBERT DROUHIN: LOTS 1-100
142	MAIN INDEX SPECIAL FORMAT INDEX
	LOCATION, STORAGE AND DELIVERY OF WINES
146	GLOSSARY OF ABBREVIATIONS
147	CONDITIONS OF SALE
148	CONDITIONS FOR LIVE ONLINE BIDDING
149	IMPORTANT INFORMATION FOR PURCHASERS AT WINE SALES
150	INFORMATION ON SALES AND USE TAX
151	GUIDE FOR ABSENTEE BIDS
152	ABSENTEE/TELEPHONE BIDDING FORM
153	SHIPPING/COLLECTION/STORAGE
154	SHIPPING/COLLECTION/STORAGE FORM





RARE
DOMAINE DE LA ROMANÉE-CONTI

FROM THE PERSONAL CELLAR OF

Robert Drouhin

NEW YORK
SATURDAY 13 OCTOBER 2018
10 AM

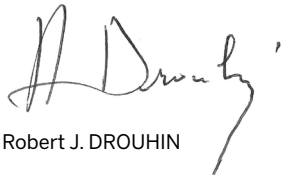
LOTS 1-100

A NOTE FROM ROBERT DROUHIN

1937, 1938 Romanée-Conti and La Tâche, how many memories are linked to this period and these great names! How many meals at home with the great restaurateurs: Mr. Point - La Pyramide in Vienne, Mr. Vaudable - restaurant Maxim's, discussing all the subtle differences. How many memories at the foot of the Romanée-Conti estate or in the cellars with Mr. Noblet, how many memories with my father Maurice Drouhin, proud to mature these wines, happy to educate me with true quality and awareness of luxury!

These wines are testimony of Burgundy, of its fundamental values linked to history and tradition: integrity, work, patience, quality, ...

It is both with regret and pleasure that I share these bottles. Regret even though there remain some for my children and friends but mainly pleasure as those who will purchase these bottles, apart from the appreciation of quality and the true luxury they convey, they will receive a testimony of my family and Burgundy at its very best.



Robert J. DROUHIN

To watch the video of *Robert Drouhin, A Life Less Ordinary*, please visit:
<https://www.sothebys.com/en/videos/the-extraordinary-wine-collection-of-robert-drouhin>







Joseph Drouhin
AUX CELLIERS DES ROIS DE FRANCE ET DES DUCS DE BOURGOGNE A BEAUNE



Joseph Drouhin
AUX CELLIERS DES ROIS DE FRANCE ET DES DUCS DE BOURGOGNE A BEAUNE

La Tache 1949

Joseph Drouhin
Tache 1949

THE PERSONAL CELLAR OF ROBERT DROUHIN

By Serena Sutcliffe, MW

When contemplating this extraordinary collection of some of Burgundy's greatest wines, it occurred to me that the sub-title of the sale could be *When History Meets Integrity*. The historical importance is the array of the most stunning vintages from the last century, concentrated on two fabulous estates, *Domaine de la Romanée-Conti* and the Grand Cru holdings of the illustrious *Drouhin* family. The integrity is linked to the renown and reputation of *Robert Drouhin*, who has kept these wines with the utmost care and devotion, drinking some with family and friends over the decades and protecting a proportion for others to experience and love as much as he himself has done.

We are immensely honoured that *Robert Drouhin* has chosen *Sotheby's* to handle this unique sale and we approach it with the same respect that he has shown for both his profession and his region's wines, over a lifetime of work and achievement. This is a man who was called very young to a position of enormous responsibility within the family firm and who fulfilled his destiny as a pillar of the Burgundian wine trade in a way that is deeply admirable. Both vineyard owner and négociant, he has seen and understood every aspect of his region's development over the decades, contributing to the general good as well as bringing on a formidable new generation of *Drouhins*, in the form of his four children. I first met *Robert Drouhin* in the Seventies, scarcely daring to talk to him, and it has been a privilege and a pleasure to see each other, taste wines and share views ever since. What has always struck me about *Robert* is his honesty, his direct approach and his absolute 'feel' for what constitutes a wine that is a true reflection of its vineyard and the best expression of its origin.

The many years during which the *Drouhin* family were the exclusive distributors in France and Belgium for the *Domaine de la Romanée-Conti* gave them a great understanding of these breathtaking wines that are so full of individual character and beauty that they astound us every time we come into contact with them. Those of us who are lucky enough to follow the superb contemporary vintages of the *Domaine* are probably, also, the first to accept that its wines from the Thirties, Forties, Fifties and Sixties are especially remarkable. Family managers change, methods and equipment can be modified, even the nuances of climate vary, but these 'divine' vineyards, part of France's vinous patrimony, have something 'different', a dimension, a spark, a complexity - the ability to enchant. The depth of the *Domaine's* wines is all here. And I have the taste of *La Tâche 1961* in my mouth now, a few months after sharing a bottle at lunch with *Robert*.

Robert Drouhin

This was paired with Musigny 1961 from the Drouhin Domaine, a wine that touches every olfactory sensation. We have in this sale a precious few of these landmark bottles from that magic trio of vintages, 1959, 1961 and 1962, in the family's flagship Grands Crus.

Robert Drouhin's knowledge of wines and how they evolve and develop tells him that they cannot be kept for ever in a state of suspension - although the blazing beauty of the wines we tasted from his cellar belie their age. Meticulously stored and registered, we at first gazed in disbelief at what we were seeing! And such memories were revived - La Tâche 1952, drunk, for example, with that great Burgundy man, Harry Yoxall, and those endless discussions and revisits to the glass in an effort to pin down why the scent and finish of Romanée Conti are in a world of their own.

Now it is time for more people to seize the moment and to take advantage of an exceptionally rare opportunity to drink Burgundian history.

Serena Sutcliffe

Serena Sutcliffe, MW

To watch the video of *Serena Sutcliffe, Expert Voices on the Personal Cellar of Robert Drouhin*, please visit:

<https://www.sothebys.com/en/videos/a-taste-thats-eternal-the-legendary-wines-of-robert-drouhin>



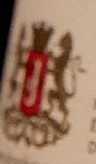


1962

Joseph Drouhin

RÉCOLTE DU DOMAINE

GRIOTTE-CHAMB
GRAND CRU



APPELLATION C

MIS EN BOUTEILLE PAR JOSEPH D
ÉLEVEUR À BEAUNE, CÔTE - D'OR,
DES ROIS DE FRANCE ET DES D

FRANCE



1961

Joseph Drouhin

RÉCOLTE DU DOMAINE

MUSIGNY
GRAND CRU

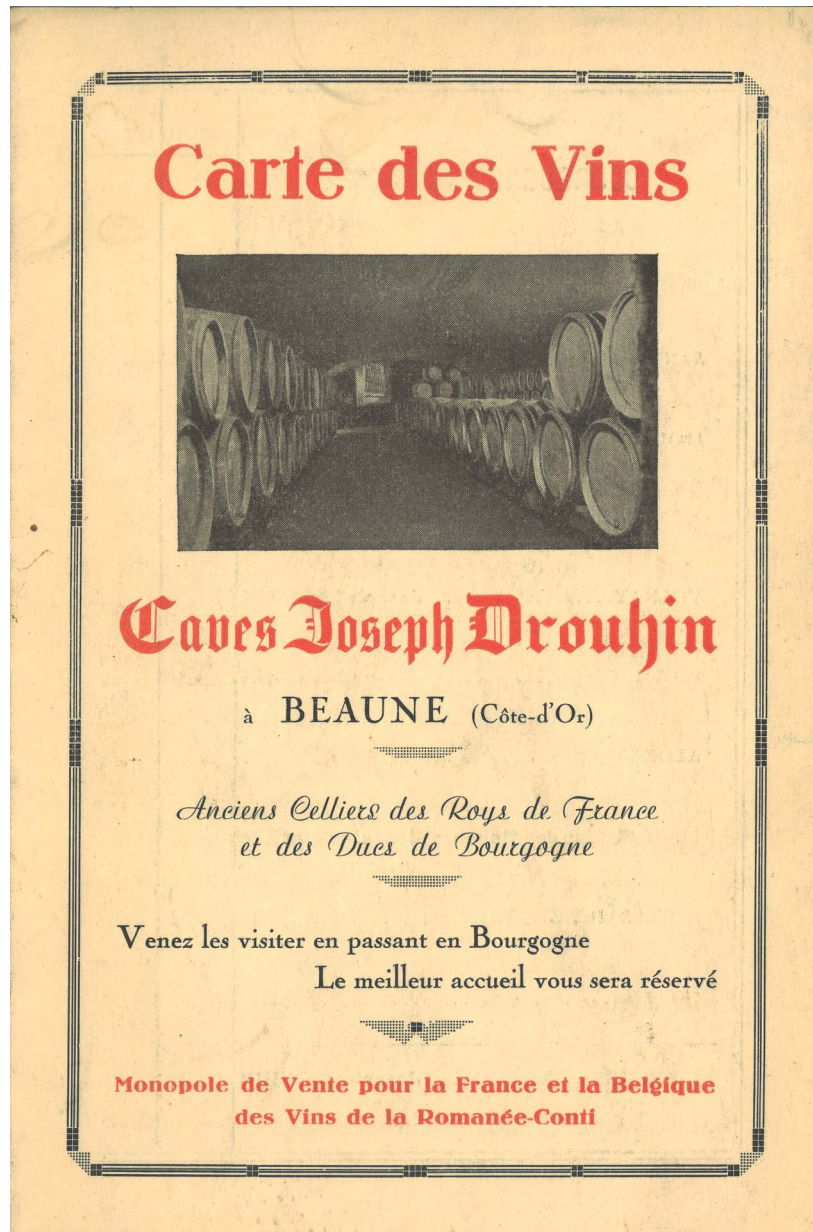


APPELLATIO

MIS EN BOUTEILLE PAR
ÉLEVEUR À BEAUNE, C
DES ROIS DE FRAN

PROVENANCE

The Domaine de la Romanée-Conti wines in this sale came directly from DRC as a result of Maison Joseph Drouhin's relationship as exclusive distributor for DRC in France and Belgium from 1928 to 1964.





THE CELLAR

The wines in this cellar were moved from Maison Joseph Drouhin's main cellar to Robert Drouhin's personal cellar in Beaune over fifty years ago. The wines have remained there in ideal conditions, and did not leave until inspection and subsequent shipping in preparation for this sale.

LABELS, CAPSULES, CORKS

The Domaine de la Romanée-Conti wines in this sale were delivered to Maison Joseph Drouhin unlabeled. The labels were received separately and applied by Maison Joseph Drouhin. In some cases Maison Joseph Drouhin did not receive labels for the bottles. These bottles were delivered to the Drouhin family's personal cellar and labels were amended to reflect the correct vintage, such as the 1947 Richebourg (pictured). Additionally it is believed some of the wines being offered were purchased in barrel from DRC and were bottled by Maison Joseph Drouhin. As a result some of these wines have Maison Joseph Drouhin branded corks. Many of the DRC bottles have wax capsules and it is assumed they were applied by Maison Joseph Drouhin. Please reference specific lot inspection notes.



CORK IN A 1947
RICHEBOURG BOTTLE



CAPSULE ON A
1952 RICHEBOURG BOTTLE



CAPSULE ON A
1959 LA TACHE MAGNUM



INSPECTION, PACKING, SHIPPING

All wines were inspected in 2018, in Beaune, by Connor Kriegel, Sotheby's Head of Auction Sales New York. Each bottle was wrapped in Maison Joseph Drouhin tissue paper and straw wrappers and placed in custom-made wooden boxes made specifically for this auction. Each wooden case was closed in Beaune and subsequently stamped with individual lot numbers. The wines were transported from Beaune via air to our East Coast warehouse.

Drouhin
FRANCE

Robert Drouhin
BEAUNE

Sotheby's ^{NY} Wine

RARE DRC WINES ACQUIRED FROM THE PERSONAL CELLAR OF

Robert Drouhin

BEAUNE

FRANCE

Sotheby's ^{NY} Wine

ACQUIRED FROM THE PERSONAL CELLAR OF

Drouhin

FRANCE

Sotheby's ^{NY} Wine

RARE DRC WINES ACQUIRED

Robert

BEAUNE

Sotheby's ^{NY} Wine

RARE DRC WINES ACQUIRED FROM THE PERSONAL CELLAR OF

Robert Drouhin

BEAUNE

FRANCE

Sotheby's ^{NY} Wine

RARE DRC WINES ACQUIRED FROM THE PERSONAL CELLAR OF

Drouhin

FRANCE

Robert

BEAUNE

LAR OF

in

FRANCE

Sotheby's  Wine

RARE DRC WINES ACQUIRED FROM THE PERSONAL CELLAR

Robert Drouhin

BEAUNE

FR

Sotheby's  Wine

C WINES ACQUIRED FROM THE PERSONAL CELLAR OF

Robert Drouhin

FRANCE

RARE DRC

Re

BEAUNE

Sotheby's  Wine

RARE DRC WINES ACQUIRED FROM THE PERSONAL CELLAR OF

Robert Drouhin

BEAUNE


FRANCE

s  Wine

M THE PERSONAL CELLAR OF

Sotheby's  Wine

RARE DRC WINES ACQUIRED FROM



With a history that can be traced back to 1232, this extraordinary collection of wines from Burgundy's most exalted domain might seem almost modern. However, with this dazzling array of historic bottles and magnums from four decades, one enters into a world that is very rarely glimpsed. The Thirties, Forties, Fifties and Sixties of the last century produced some of the most memorable wines ever made at the Domaine, through years of difficulty and victory, economic and agricultural change, all against the backdrop of the most magnificent vineyard plots of the Côte de Nuits.

The unswerving philosophy of the owning families of the Domaine was, and remains, to nurture their great treasure and to produce wines that honour their origin. Respect for each 'climat', for its soil, its exposition, married to the conditions of the year, has always been the dominant ethos. The meticulous attention to detail is a mantra observed by each generation of those who make these magical wines. Descriptions of how each great vineyard expresses itself in liquid form can run to every term known to wine lovers but, for me, there are as many facets as the finest round brilliant cut diamond, hence the eternal fascination of constant discovery. These wines can be sumptuous, yet delicate, seductive and yet profound, with a scent that may be inexplicable but is always present. Myriad flavours explode on the palate, evolving over the years to new areas of sensation. Then, just as you think you have taken all from the wine, the lingering, haunting finish refuses to say goodbye. That is a landmark wine from the Domaine de la Romanée-Conti.

Serena Sutcliffe, MW

DOMAINE DE LA ROMANEE-CONTI



The Domaine owns one-seventh of this vineyard. The rock structure that underpins Echézeaux is immensely complicated, with lower Bathonian and upper Bajocian limestones in constant interplay. The vineyard is situated very high for a Grand Cru, but the soil has good pebbles and is deep enough to produce outstanding wines.

Serena Sutcliffe, MW

SOCIÉTÉ CIVILE DU DOMAINE DE LA ROMANÉE-CONTÉE
PROPRIÉTAIRE A VOSNE-ROMANÉE (COTE-D'OR)

ECHÉZEUX

APPELLATION . ÉCHÉZEUX . CONTRÔLÉE

16.056 Bouteilles Récoltées

No
ANNÉE 1959

0712

L'ASSOCIÉ-GÉRANT

H. de Villain

Mise en bouteille au domaine

SOCIÉTÉ CIVILE DU DOMAINE DE LA ROMANÉE-CONTÉE
PROPRIÉTAIRE A VOSNE-ROMANÉE (COTE-D'OR)

ECHÉZEUX

APPELLATION . ÉCHÉZEUX . CONTRÔLÉE

16.056 Bouteilles Récoltées

No
ANNÉE 1959

0712

L'ASSOCIÉ-GÉRANT

H. de Villain

ECHEZEUX

NE DE LA ROM
ROMANÉE (COT

SOCIÉTÉ CIVILE DU DOMAINE DE LA
PROPRIÉTAIRE A VOSNE-ROMANÉE (C

ZEAL

ÉCHÉZEA

ZEALX . CON

APPELLATION . ÉCHÉZEALX . C

les Récoltées

16.056 Bouteilles Réco

L'ASSO

No

H. de

0710

ANNÉE

STERILISATION

Echézeaux 1959

Domaine de la Romanée-Conti

Côte de Nuits, Grand Cru

u. 1x3cm, 1x3.5cm, 1x5cm, BT #'s 710-712, damp-stained and scuffed labels, labels stamped "Interdiction d'Exporter aux USA et UK," cracked wax capsules, excellent color and clarity

Drunk recently at a wonderful New York dinner party when it was served with a brilliant duck consommé with wild mushroom ravioli which perfectly picked up the earthy intensity of the wine. Ripe and "sweet", it turned to chocolate in the glass. Lacy, ethereal finish. Serena Sutcliffe, MW

1 3 bts (owc)

per lot: \$6,000-9,000

“Ripe and ‘sweet’, it turned to chocolate in the glass. Lacy, ethereal finish.”

SERENA SUTCLIFFE, MW
ON ECHÉZEAUX, DRC 1959





“In 1918 my father Maurice Drouhin took over the business, and thanks to him really, the company was oriented. The goal was to produce only high end wine.

He built a close, personal relationship with the owners of Domaine de La Romanée-Conti and had the exclusive distribution for all DRC for France and Belgium.”

ROBERT DROUHIN

The Domaine owns over a third of Grands Echézeaux, one of the two Grands Crus of Flagey Echézeaux and much the smaller of the two. There is an enormous difference in gradient between these Grands Crus, with the upper part of Echézeaux between 13 and 14 percent and Grands Echézeaux only three to four percent. With its well drained clay soil over limestone, there is power and structure, plus a truffley character to Grands Echézeaux.

Serena Sutcliffe, MW

MILE DU DOMAINE DE
PRIETAIRE A VOSNE-ROMANÉE

GRANDS ÉCHÉZEUX

APPELLATION . GRANDS ÉCHÉZEUX

9.120 Bouteilles

No 0106

ANNÉE 1957

Mise en bouteille au domaine

SOCIÉTÉ CIVILE DU DOMAINE DE LA
PRIETAIRE A VOSNE-ROMANÉE (C)

GRANDS ÉCHÉZEUX

APPELLATION . GRANDS ÉCHÉZEUX

9.120 Bouteilles Récolte

No 0174

ANNÉE 1957

Mise en bouteille au domaine

SOCIÉTÉ CIVILE DU DOMAINE
PRIETAIRE A VOSNE-ROMANÉE

GRANDS ÉCHÉZEUX

APPELLATION . GRANDS ÉCHÉZEUX

9.120 Bouteilles

No 0106

ANNÉE 1957

Mise en bouteille au domaine

GRANDS ECHEZEAUX

MAISON DE LA ROMANÉE-CONTI
ROMANÉE (COTE-D'OR)

CHÉZEAX

ÉCHÉZEAUX . CONTRÔLÉ

Des Récoltées

L'ASSOCIÉ-GÉRANT

H. de Villain

mise en bouteille au domaine

SOCIÉTÉ CIVILE DU DOMAINE DE LA ROMANÉE-CONTI
PROPRIÉTAIRE A VOSNE-ROMANÉE (COTE-D'OR)

GRANDS ÉCHÉZEAUX

APPELLATION . GRANDS ÉCHÉZEAUX . COTE D'OR . GRANDS ÉCHÉZEAUX

9.120 Bouteilles Récoltées en 1957

N° 0172

ANNÉE 1957

H. de Villain 1957

0169

Mise en bouteille au domaine

Grands Echézeaux 1962

Domaine de la Romanée-Conti

Côte de Nuits, Grand Cru

u. 1x3.5cm, 1x5cm, 1x5.5cm, 2x6cm, 1 level into the neck, BT # 10576, 10578, 10581, 10583, 1 different style label without BT #, heavily damp-stained and scuffed labels, 3 torn and partially missing labels, 1 nicked label, 1 BT # obscured, labels stamped "Interdiction d'Exporter aux USA et UK," cracked wax capsules, 3 wax capsules partially missing on top, slight signs of seepage on top, excellent color and clarity

2 6 bts (owc)

per lot: \$12,000-18,000

DU DOMAINE DE
A VOSNE-ROMAN

OS ÉCHI

GRANDS ÉCHÉZEUX

15.766

10578

62

en bouteille au

SOCIÉTÉ CIVILE DU DOMAINE DE LA ROMANÉE
PROPRIÉTAIRE A VOSNE-ROMANÉE (COTE D'OR)

GRANDS ÉCHÉZEUX

APPELLATION . GRANDS ÉCHÉZEUX . COTE D'OR

15.766 *Brochettes Recettes*

N° 10578

ASSOCIÉ-GÉRANT

ANNÉE 1962

H. de V. & C.

Mise en bouteille au

DU DOMAINE DE LA ROMANÉE
A VOSNE-ROMANÉE (COTE D'OR)

OS ÉCHÉZEUX

GRANDS ÉCHÉZEUX . COTE D'OR

Mise en Bouteille au

ANNÉE 1893

N° 10578

10578



Grands Echézeaux 1961

Domaine de la Romanée-Conti

Côte de Nuits, Grand Cru

Lots 3-4: Mise du Domain capsules, labels stamped

"Interdiction d'Exporter aux USA et UK." Lot 3: u. 1x4.5cm,

1x6cm, 1x6.5cm, 1x7cm, 2x7.5cm, BT #'s 7821, 7935, 7941

heavily damp-stained, faded, and scuffed labels, 3 torn and

mostly missing labels, 1 torn and partially missing, vintage

and bottle #'s obscured on 3 bottles, scuffed and stained

capsules, excellent color and clarity, Lot 4: u. 1x4.5cm,

2x5.5cm, 2x7cm, 1x8.5cm, BT #'s 7932, 7945, heavily damp-

stained, scuffed, and faded labels, 4 labels torn and partially

missing, BT #'s illegible on 4 bottles, and vintage illegible on

3 bottles, cellar records confirm vintage, scuffed and stained

capsules, excellent color and clarity

3 6 bts (owc)

4 6 bts (owc)

per lot: \$7,000-10,000



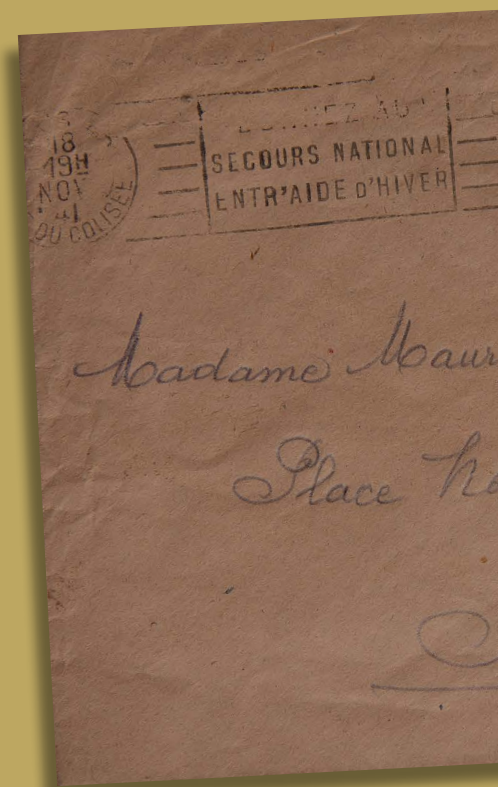


MAURICE DROUHIN

“In 1940 my father was imprisoned by the Germans. From prison he gave instructions in writing to my mother about what to do with the business and how to manage the wines of Domaine de la Romanée-Conti.

‘Cut down the allocation by one-third, because we don’t want the wines to be sold too quickly in these difficult times....It’s time to bottle the wines of the Romanée-Conti.’”

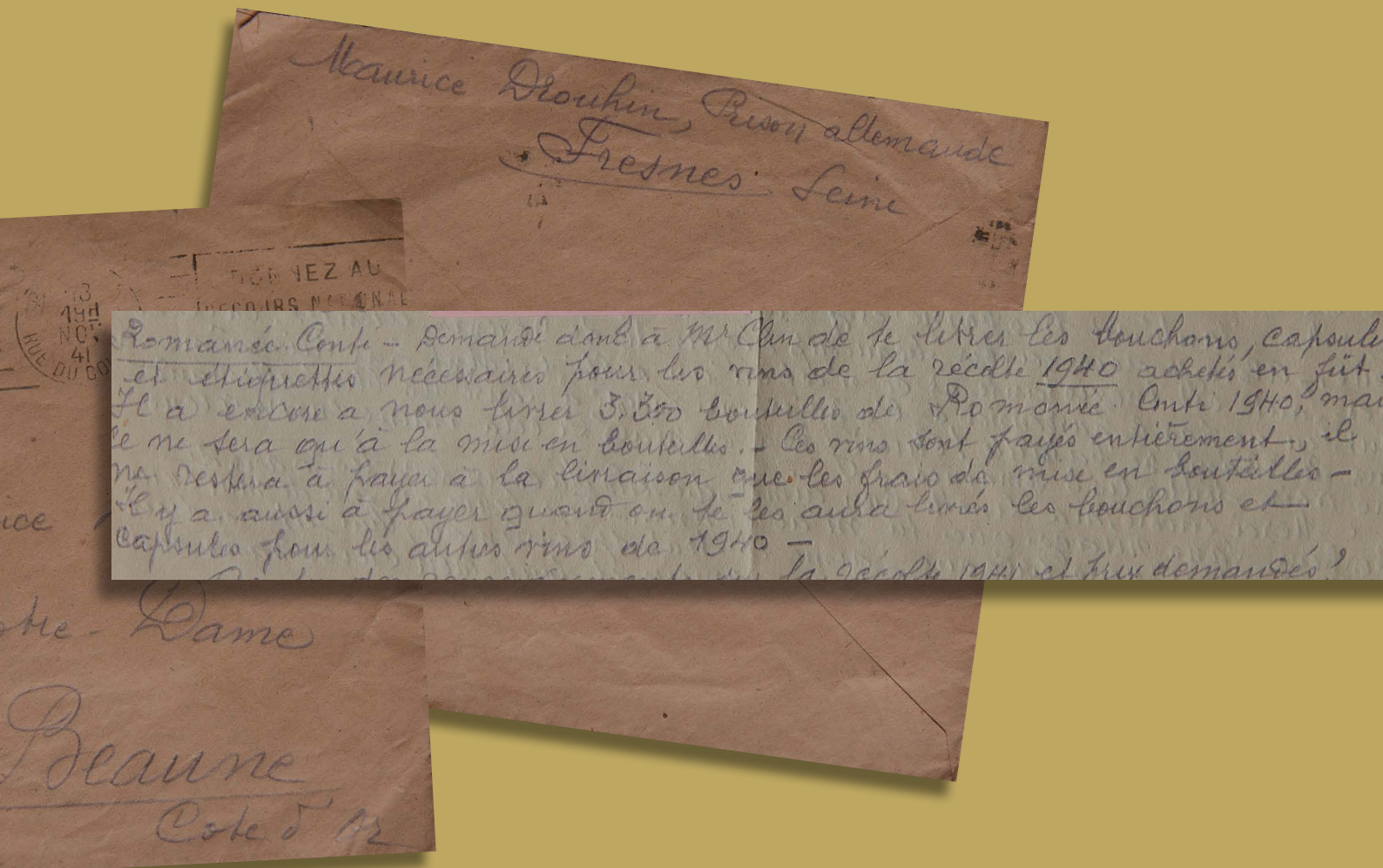
ROBERT DROUHIN



“In 1942 he was still in prison and a portion of Domaine de la Romanée-Conti’s shares became available. Quite naturally they were offered to my father.

Understandably, as he was in prison, he didn’t know whether he would still be alive the next day. It would have been difficult to approach the bank under these conditions. So he didn’t want to take the risk and said ‘I’m sorry, I can’t buy.’”

ROBERT DROUHIN



Maurice Drouhin, Prison allemande
Fresnes, Seine

3
1941
NOV
41
MIE DU CO

RECEVEZ AU
SECOURS NATIONAL

Romanée-Conti - Demande donc à M. Cun de se faire les bouchons, capsules
et étiquettes nécessaires pour les vins de la récolte 1940 achetés en fût.
Il a encore à nous faire 3.500 bouteilles de Romanée-Conti 1940, mais
ce ne sera qu'à la mise en bouteilles. - Ces vins sont payés entièrement, il
ne restera à payer à la livraison que les frais de mise en bouteilles -
Il y a aussi à payer quant on se les aura livrés les bouchons et
capsules pour les autres vins de 1940 -
Cordialement, M. Cun

Beanne
Cote d'Or

LOT 5

SOCIÉTÉ CIVILE DU DOMAINE DE LA ROMANÉE-CONTI
PROPRIÉTAIRE A VOSNE-ROMANÉE (COTE D'OR)

GRANDS ÉCHÉZEUX

APPELLATION . GRANDS ÉCHÉZEUX . CONTRÔLÉE

9.120 Bouteilles

No 0106

ANNÉE 1957

Mise en bouteille

SOCIÉTÉ CIVILE DU DOMAINE DE LA ROMANÉE-CONTI
PROPRIÉTAIRE A VOSNE-ROMANÉE (COTE D'OR)

GRANDS ÉCHÉZEUX

APPELLATION . GRANDS ÉCHÉZEUX . CONTRÔLÉE

9.120 Bouteilles

No 0174

ANNÉE 1957

Mise en bouteille au domaine

SOCIÉTÉ CIVILE DU DOMAINE DE LA ROMANÉE-CONTI
PROPRIÉTAIRE A VOSNE-ROMANÉE (COTE D'OR)

GRANDS ÉCHÉZEUX

APPELLATION . GRANDS ÉCHÉZEUX . CONTRÔLÉE

9.120 Bouteilles Récoltées

No 0108

ANNÉE 1957

L'ASSOCIÉ-GÉRANT

H. de Villain

Mise en bouteille au domaine

SOCIÉTÉ CIVILE DU DOMAINE DE LA ROMANÉE-CONTI
PROPRIÉTAIRE A VOSNE-ROMANÉE (COTE D'OR)

GRANDS ÉCHÉZEUX

APPELLATION . GRANDS ÉCHÉZEUX . CONTRÔLÉE

9.120 Bouteilles

No

ANNÉE

Mise en bouteille



Grands Échézeaux 1957

Domaine de la Romanée-Conti

Côte de Nuits, Grand Cru

u. 1x4cm, 2x4.5cm, 1x5.5cm, 2 levels into the neck, BT #'s 166, 168, 169, 171, 172, 174, scuffed, stained, and faded labels, 2 partially torn labels, labels stamped "Interdiction d'Exporter aux USA et UK," cracked wax capsules with slight signs of seepage on top, slightly damaged owc, excellent color and clarity

5 6 bts (owc)

per lot: \$5,000-7,000

LOT 5

The Domaine owns 50% of this vineyard. Aged in barrels purchased from cooper François Frères, as all the DRC wines are, they benefit from a superb position in the vineyard and, in the great vintages, Richebourg is like velvet come to life.

Serena Sutcliffe, MW

SOCIÉTÉ CIVILE DU DOMAINE DE LA ROMANÉE-CONTI
PROPRIÉTAIRE A VOSNE-ROMANÉE (COTE-D'OR)

RICHEBOURG
APPELLATION . RICHEBOURG . CONTRÔLÉE

17.801 Bouteilles Récolté
N° 15777 L'ASS
ANNÉE 1964 H. de
Mise en bouteille au domaine

SOCIÉTÉ CIVILE DU DOMAINE DE LA ROMANÉE-CONTI
PROPRIÉTAIRE A VOSNE-ROMANÉE (COTE-D'OR)

RICHEBOURG
APPELLATION . RICHEBOURG . CONTRÔLÉE

ANNÉE 1952 Mise en Bouteille au Domaine

PRODUCTION D'EXPORTATION POUR LES USA, ET UK

DOMAINE DE LA ROMANÉE-CONTI

RICHEBOURG
RICHEBOURG - Appellation d'Origine Contrôlée

J. M. Duval
De Villaine & J. M. Duval
Petits-Fils de J. M. Duval

ANNÉE 1947

RICHEBOURG

ANÉE-CONTI
OURG

on Contrôlée

vault Blochet

Chambon
vault Blochet
propriétaires

75 CL

SOCIÉTÉ CIVILE DU DOMAINE DE LA ROMANÉE-CONTI
PROPRIÉTAIRE A VOSNE-ROMANÉE (COTE-D'OR)

RICHEBOURG

APPELLATION . RICHEBOURG . CONTRÔLÉE

ANNÉE 1952

Mise en Bouteille au Domaine

SOCIÉTÉ CIVILE DU DOMAINE DE LA ROMANÉE-CONTI
PROPRIÉTAIRE A VOSNE-ROMANÉE (COTE-D'OR)

RICHEBOURG

APPELLATION . RICHEBOURG . CONTRÔLÉE

17.596 Bouteilles Récoltées

No

ANNÉE 1959

2799

L'ASSOCIÉ-GÉRANT

H. de Villain

Mise en bouteille au domaine



“A rich, mature beauty from start to finish. Pure velvet texture. Bouquet and flavour that encompass plums and cloves. Great ‘sweet’ finish - one can see lychees. A very great treat.”

SERENA SUTCLIFFE, MW
ON 1964 RICHEBOURG, DRC

Richebourg 1964

Domaine de la Romanée-Conti

Côte de Nuits, Grand Cru

Lots 6-10: Labels stamped “Interdiction d’Exporter aux USA et UK.” Lot 6: u.6cm, BT #13,420, Mise du Domaine capsules, heavily scuffed, stained, torn and mostly missing label, 1 sunken cork, packed in 2 bottle owc, excellent color and clarity, Lot 7: u. 1x3.5cm, 1 level into the neck, BT #'s 15772, 15777, scuffed and damp-stained labels, cracked wax capsules, 1 partially missing wax capsule on top, excellent color and clarity, Lot 8: u. 1x4.5cm, 1x5cm, Mise du Domaine capsules, BT #13425, 1 scuffed and stained label, 1 heavily scuffed, stained, and faded label, mostly missing with BT # and vintage missing, cellar records confirm vintage, packed in 3 bottle owc, excellent color and clarity, Lot 9: u. 3x4.5cm, BT #'s 13415, 13417, 13422, Mise du Domaine capsules, heavily damp-stained, scuffed, and faded labels, partially torn and 2 partially missing labels, excellent color and clarity, Lot 10: u. 1x3.5cm, 1x4cm, 1x5.5cm, BT #'s 13414, 13418, 13423, Mise du Domaine capsules, heavily damp-stained, scuffed, and faded labels, partially torn and 2 partially missing labels, sunken corks, excellent color and clarity

A rich, mature beauty from start to finish. Pure velvet texture. Bouquet and flavour that encompass plums and cloves. Great “sweet” finish - one can see lychees. A very great treat. Serena Sutcliffe, MW

6	1 bt (owc)	per lot: \$3,200-5,000
7	2 bts (owc)	
8	2 bts (owc)	per lot: \$6,500-10,000
9	3 bts (owc)	
10	3 bts (owc)	per lot: \$10,000-15,000

Richebourg 1962

Domaine de la Romanée-Conti

Côte de Nuits, Grand Cru

u. 1x4cm, heavily scuffed, damp-stained label, partially torn
and missing label, cracked wax capsule, label stamped
"Interdiction d'Exporter aux USA et UK," BT # slightly
obscured, excellent color and clarity

11 1 bt (owc)

per lot: \$3,200-5,000



PERSONAL CELLAR OF
Robert Drouhin
FRANCE

RARE DRC WINES AND SPIRITS

Robert Drouhin

BEAUNE

PERSONAL CELLAR OF

Robert Drouhin

FRANCE

RARE DRC WINES AND SPIRITS

Robert Drouhin

BEAUNE

PERSONAL CELLAR OF

Robert Drouhin

FRANCE

SOCIÉTÉ CIVILE DU DOMAINE DE LA ROMANÉE-CONTI
PROPRIÉTAIRE À VOSNE-ROMANÉE (CÔTE-D'OR)

RICHEBOURG

APPELLATION RICHEBOURG CONTRÔLÉE

16.416 Bouteilles Récoltées

N° 2978

L'ASSOCIÉ-GÉRANT

ANNÉE 1962

H. d. Villain

Mise en bouteille au domaine

SOCIÉTÉ CIVILE DU DOMAINE DE LA ROMANÉE
PROPRIÉTAIRE A VOSLEZ - ROMANÉE (CÔTE D'OR)

RICHE SORGO

APPELLATION . RICHESORGO . CÔTE D'OR

13704 Bouteilles Recoltes

N°

L'ASSOCIÉ-GÉRANT

084
MISE EN BOTTES 1951

H. de Villan

Mis en bouteille au domaine

Richebourg 1961

Domaine de la Romanée-Conti

Côte de Nuits, Grand Cru

Lots 12-21: Mise du Domaine capsules, labels stamped "Interdiction d'Exporter aux USA et UK." heavily scuffed, stained, faded and mostly missing labels Lot 12: u. 2x3.5cm, 1x4cm, BT # 8116, 1 label almost entirely missing on bottle, cellar records confirm vineyard and vintage, 1 bottle with BT # obscured, excellent color and clarity, Lot 13: u. 2x4.5cm, 1x5cm, vintage and BT #'s obscured, cellar records confirm vintage, slightly scuffed capsules, excellent color and clarity, Lot 14: u. 2x5cm, 1x5.5cm, BT #'s obscured, 2 vintage obscured, cellar records, confirm vintage, 1 torn capsule, 2 slightly sunken corks, excellent color and clarity, Lot 15: u. 2x5cm, 1x5.5cm, almost entirely missing labels, 1 torn and partially missing label, BT #'s obscured, 2 vintages obscured, cellar records confirm vintage, 1 slightly sunken cork, slightly scuffed capsules, excellent color and clarity, Lot 16: u. 1x5cm, 2x5.5cm, 2 vintages obscured, cellar records confirm vintage, BT #'s obscured, excellent color and clarity, Lot 17: u. 3x5.5cm, heavily scuffed, stained, torn, and mostly missing labels, BT #'s and vintage obscured, cellar records confirm vintage, scuffed and stained capsules, excellent color and clarity, Lot 18: u. 3x5.5cm, 1 vintage obscured, cellar records confirm vintage, BT #'s obscured, 1 slightly sunken cork, excellent color and clarity, Lot 19: u. 1x5cm, 1x5.5cm, 1x6cm, BT # 8344, 1 BT missing vintage, cellar records confirm vintage, 2 BT #'s obscured, 2 slightly sunken corks, 1 torn capsule, excellent color and clarity, Lot 20: u. 1x5.5cm, 2x6cm, BT #'s obscured on labels, 2 slightly sunken corks, excellent color and clarity, Lot 21: u. 3x6.5cm, 1 bottle without label, cellar records confirm wine and vintage, BT #'s obscured, excellent color and clarity

Bouquet of sweet candied violets. Delicate sweetness.

Serena Sutcliffe, MW

12	3 bts (owc)
13	3 bts (owc)
14	3 bts (owc)
15	3 bts (owc)
16	3 bts (owc)
17	3 bts (owc)
18	3 bts (owc)
19	3 bts (owc)
20	3 bts (owc)
21	3 bts (owc)

per lot: \$5,000-7,500



“My father unfortunately had a stroke, and at the age of 24, I had to step in and be in charge of the company. It was a great chance for a young man.”

ROBERT DROUHIN



Richebourg 1959

Domaine de la Romanée-Conti

Côte de Nuits, Grand Cru

Lots 22-31: labels stamped "Interdiction d'Exporter aux USA et UK," wax capsules with Maison Joseph Drouhin crest on top. Lot 22: BT #'s 2798, 2799, 2802, slightly scuffed labels, otherwise excellent levels, appearance, color, and clarity, Lot 23: BT #'s 2803-2805, 1 slightly scuffed label, 2 slightly stained labels, otherwise excellent levels, appearance, color, and clarity, Lot 24: BT #'s 2980-2982, excellent levels, appearance, color, and clarity, Lot 25: BT #'s 2983-2985, slightly stained labels, otherwise excellent levels, appearance, color, and clarity, Lot 26: BT #'s 2810-2812, slightly stained labels, otherwise excellent levels, appearance, color, and clarity, Lot 27: BT #'s 2835-2837, 2 stained labels, otherwise excellent levels, appearance, color, and clarity, Lot 28: BT #'s 3016-3018, heavily scuffed, stained, faded and partially torn labels, cracked wax with slight signs of seepage on top, excellent levels, color, and clarity, Lot 29: BT # 3019, heavily scuffed, stained, faded, and partially torn labels, 2 BT's with #'s obscured, cracked wax capsules with very slight signs of seepage on top, excellent levels, color, and clarity, Lot 30: u. 1x3cm, BT #'s 2977-2979, 2 slightly stained labels, otherwise excellent levels, appearance, color, and clarity, Lot 31: u. 1x3cm, BT #'s 2849, 2975-2976, slightly stained labels, otherwise excellent levels, appearance, color, and clarity

22	3 bts (owc)
23	3 bts (owc)
24	3 bts (owc)
25	3 bts (owc)
26	3 bts (owc)
27	3 bts (owc)
28	3 bts (owc)
29	3 bts (owc)
30	3 bts (owc)
31	3 bts (owc)

per lot: \$9,000-15,000



SOCIÉTÉ CIVILE DU DOMAINE DE LA ROMANÉE-CONTI
PROPRIÉTAIRE A VOSNE-ROMANÉE (COTE-D'OR)

RICHEBOURG

APPELLATION . RICHEBOURG . CONTROLÉE

17-596 Boutelles Re
No 2975
ANNÉE 1959

L'ASSOCIÉ-GÉRANT
H. de V. d. L.

Mise en bouteille au domaine

SOCIÉTÉ CIVILE DU DOMAINE DE LA ROMANÉE-CONTI
PROPRIÉTAIRE A VOSNE-ROMANÉE (COTE-D'OR)

RICHEBOURG

APPELLATION . RICHEBOURG . CONTROLÉE

17-596 Boutelles Re
No 2976
ANNÉE 1959

L'ASSOCIÉ-GÉRANT
H. de V. d. L.

Mise en bouteille au domaine

SOCIÉTÉ CIVILE DU DOMAINE DE LA ROMANÉE-CONTI
PROPRIÉTAIRE A VOSNE-ROMANÉE (COTE-D'OR)

RICHEBOURG

APPELLATION . RICHEBOURG . CONTROLÉE

17-596 Boutelles Re
No 2836
ANNÉE 1959

L'ASSOCIÉ-GÉRANT
H. de V. d. L.

Mise en bouteille au domaine

SOCIÉTÉ CIVILE DU DOMAINE DE LA ROMANÉE-CONTI
PROPRIÉTAIRE A VOSNE-ROMANÉE (COTE-D'OR)

RICHEBOURG

APPELLATION . RICHEBOURG . CONTROLÉE

17-596 Boutelles Re
No 2812
ANNÉE 1959

L'ASSOCIÉ-GÉRANT
H. de V. d. L.

Mise en bouteille au domaine

SOCIÉTÉ CIVILE DU DOMAINE DE LA ROMANÉE-CONTI
PROPRIÉTAIRE A VOSNE-ROMANÉE (COTE-D'OR)

RICHEBOURG

APPELLATION . RICHEBOURG . CONTROLÉE

17-596 Boutelles Re
No 2812
ANNÉE 1959

L'ASSOCIÉ-GÉRANT
H. de V. d. L.

Mise en bouteille au domaine

SOCIÉTÉ CIVILE DU DOMAINE DE LA ROMANÉE-CONTI
PROPRIÉTAIRE A VOSNE-ROMANÉE (COTE-D'OR)

RICHEBOURG

APPELLATION . RICHEBOURG . CONTROLÉE

17-596 Boutelles Re
No 2835
ANNÉE 1959

L'ASSOCIÉ-GÉRANT
H. de V. d. L.

Mise en bouteille au domaine

Sotheby's Wine

RARE DRG WINES ACQUIRED FROM THE PERSONA

Robert Drou

BEAUNE





SOCIÉTÉ CIVILE DU DOMAINE DE LA ROMANÉE-CONTI
PROPRIÉTAIRE A VOSNE-ROMANÉE (CÔTE D'OR)

RICHÉBOURG

APPELLATION . RICHÉBOURG

12464 Bouteilles Récoltées

N° 02046

ANNÉE 1955

Mise en bouteille au domaine

DOMAINE DE LA ROMANÉE-CONTI

RICHÉBOURG

RICHÉBOURG - Appellation Contrôlée

J. M. Duval & Blochet

de Tillaine & J. Chambon

Petits-Fils de J. M. Duval & Blochet

ANNÉE 1954

75 CL

SOCIÉTÉ CIVILE DU DOMAINE DE LA ROMANÉE-CONTI
PROPRIÉTAIRE A VOSNE-ROMANÉE (CÔTE D'OR)

RICHÉBOURG

APPELLATION . RICHÉBOURG

8512 Bouteilles Récoltées

N° 02047

ANNÉE 1956

Mise en bouteille au domaine

Richebourg 1956

Domaine de la Romanée-Conti

Côte de Nuits, Grand Cru

u. 1x3.5cm, 1 level into the neck, BT #'s 2043, 2047, bottles show lighter color, heavily scuffed and stained labels, 1 torn and partially missing, labels stamped "Interdiction d'Exporter aux USA et UK," cracked waxed capsules with very slight signs of seepages on top

32 2 bts (owc)

per lot: \$2,200-3,200

Richebourg 1955

Domaine de la Romanée-Conti

Côte de Nuits, Grand Cru

u. 1x3cm, 1x3.5cm, BT #'s 7106, 7107, heavily scuffed, stained, partially torn, and missing labels, labels stamped "Interdiction d'Exporter aux USA et UK," cracked wax capsules, 1 capsule missing on top, 1 slight sign of seepage on top, excellent color and clarity

WA 93

33 2 bts (owc)

per lot: \$3,000-4,000

Richebourg 1954

Domaine de la Romanée-Conti

Côte de Nuits, Grand Cru

The 5 on vintage pen marked over white paint, heavily scuffed and stained label, cracked wax capsule with slight signs of seepage on top, excellent level, color, and clarity

34 1 bt (owc)

per lot: \$1,000-1,500



“I think you could describe Robert Drouhin as one of the most impressive people in France’s wine world. His reputation goes before him.”

SERENA SUTCLIFFE, MW

Richebourg 1952

Domaine de la Romanée-Conti

Côte de Nuits, Grand Cru

Lots 35-47: labels stamped "Interdiction d'Exporter aux USA et UK," wax capsules with Maison Joseph Drouhin crest on top. Lot 35: u. 2x5cm, damp-stained labels, 1 sign of seepage on capsule, 1 cracked wax capsule, excellent color and clarity, Lot 36-37: Damp-stained labels, very good appearance, excellent levels, color, and clarity, Lot 38: Damp-stained labels, very good appearance, excellent levels, color, and clarity, Lot 39: u. 1x3cm, Damp-stained labels, very good appearance, excellent levels, color, and clarity, Lot 40: u. 1x3cm, damp-stained labels, very good appearance, excellent color and clarity, Lot 41: u. 2x3cm, 1x3.5cm, damp-stained labels, very good appearance, excellent color and clarity, Lot 42: u. 1x3cm, 2x3.5cm, damp-stained labels, excellent appearance, color, and clarity, Lot 43: u. 3x3.5cm, damp-stained labels, cracked wax capsules with 1 faded, otherwise very good appearance, excellent color and clarity, Lot 44: u. 2x3.5cm, 1x4.5cm, damp-stained and scuffed labels, 1 faded and 2 cracked wax capsules, very good appearance, excellent color and clarity, Lot 45: u. 2x3.5cm, 1x4cm, 1 cracked wax capsule, 1 slight sign of seepage, very good appearance, excellent color and clarity, Lot 46: u. 3x5cm, damp-stained labels, 2 cracked wax capsules, very good appearance, excellent color and clarity, Lot 47: u. 1x4.5cm, 1x5cm, 1x5.5cm, damp-stained labels, very good appearance, slightly cracked waxed capsules, excellent color and clarity

This was a very great year for the Domaine.

Serena Sutcliffe, MW

35	2 bts (owc)	per lot: \$6,500-10,000
36	3 bts (owc)	
37	3 bts (owc)	
38	3 bts (owc)	
39	3 bts (owc)	
40	3 bts (owc)	
41	3 bts (owc)	
42	3 bts (owc)	
43	3 bts (owc)	
44	3 bts (owc)	
45	3 bts (owc)	
46	3 bts (owc)	
47	3 bts (owc)	per lot: \$10,000-15,000

LOTS 35-47



MAINE DE LA ROMANÉE-CONTI
SNE-ROMANÉE (COTE-D'OR)

RICHEBOURG
APPELLATION . RICHESBOURG . CONTRÔLÉE

Mise en Bouteille au Domaine

SOCIÉTÉ CIVILE DU DOMAINE DE LA ROMANÉE-CONTI
PROPRIÉTAIRE A VOSNE-ROMANÉE (COTE-D'OR)

RICHEBOURG
APPELLATION . RICHESBOURG . CONTRÔLÉE

1952 *Mise en Bouteille au Domaine*

SOCIÉTÉ CIVILE DU DOMAINE DE LA ROMANÉE-CONTI
PROPRIÉTAIRE A VOSNE-ROMANÉE (COTE-D'OR)

RICHEBOURG
APPELLATION . RICHESBOURG . CONTRÔLÉE

1952 *Mise en Bouteille au Domaine*

SOCIÉTÉ CIVILE DU DOMAINE
PROPRIÉTAIRE A VOSNE-ROMANÉE (COTE-D'OR)

RICHEBOURG
APPELLATION . RICHESBOURG . CONTRÔLÉE

ANNÉE 1952 *Mise en Bouteille au Domaine*

SOCIÉTÉ CIVILE
PROPRIÉTAIRE A VOSNE-ROMANÉE (COTE-D'OR)

RICHEBOURG
APPELLATION . RICHESBOURG . CONTRÔLÉE

ANNÉE 1952 *Mise en Bouteille au Domaine*



“When the wines were delivered, the bottles didn’t have any labels. So the labels were delivered separately. For one reason or another, perhaps oversight or at the end when the lot was nearly finished, we had no labels left. Don’t ask me why, just mistakes.

People didn’t pay enough attention to these prestigious labels then. So we picked some other label and added the right vintage. These wines were not sold. They were for us and kept in our private house. We were completely sure of the origin of the wine, of the vintage, so we didn’t mind.”

ROBERT DROUHIN

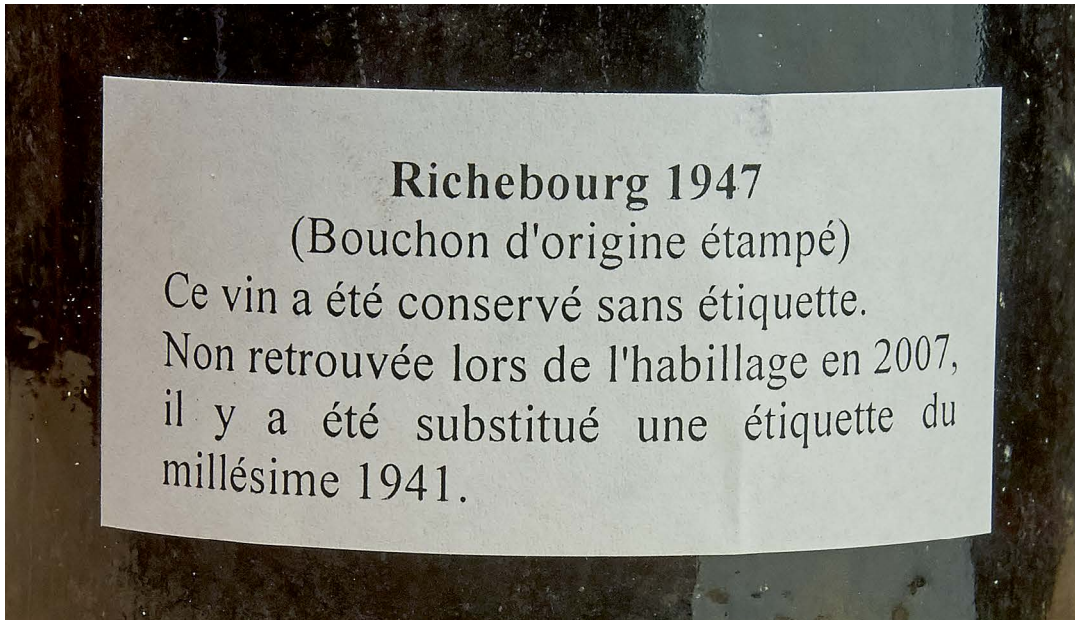
DOMAINE DE LA ROMANÉE-CONTI
RICHEBOURG
RICHEBOURG - Appellation Contrôlée
J. M. Duvault Blochet
de Villaine & J. Chambon
Petits-Fils de J. M. Duvault Blochet
propriétaires
ANNÉE 1947

DOMAINE DE LA ROMANÉE-CONTI
RICHEBOURG
RICHEBOURG - Appellation Contrôlée
J. M. Duvault Blochet
de Villaine & J. Chambon
Petits-Fils de J. M. Duvault Blochet
propriétaires
ANNÉE 1947

RICHEBOURG

DRC 1947

Niv
T B



CUSTOM BACK LABEL ON ALL 1947 RICHEBOURG BOTTLES. THESE WERE REMOVED PRIOR TO INSPECTION

Richebourg 1947

Domaine de la Romanée-Conti

Côte de Nuits, Grand Cru

Lots 48-52: The labels show the vintage "1941" changed to "1947" by pen, custom back labels removed before packing stated "In 2007, wines were labeled with the 1941 vintage label." Lot 48: slightly scuffed label, wax capsule cracked, corroded and mostly missing, "Joseph Drouhin" visible cork, very good appearance, excellent level, color, and clarity, Lot 49: u. 1x3.5cm, 2 levels into the neck, "JD" visible on 2 of 3 wax capsules, capsules are cracked, corroded, and partially missing, excellent appearance, color, and clarity, Lot 50: u. 1x3.5cm, 1x4cm, 1 level into the neck, "JD" branded on 2 of 3 wax capsules that are cracked, corroded and partially missing, excellent appearance, color, and clarity, Lot 51: u. 1x4.5cm, 2 levels into neck, "JD" branded on top of wax capsules that are cracked, corroded, and partially missing, excellent appearance, color, and clarity, Lot 52: u. 1x4cm, 2x4.5cm, slightly scuffed labels, wax capsules cracked, corroded and mostly missing, "Joseph Drouhin" visible on one cork, very good appearance, excellent color and clarity

48	1 bt (owc)	
		per lot: \$3,000-5,000
49	3 bts (owc)	
50	3 bts (owc)	
51	3 bts (owc)	
52	3 bts (owc)	
		per lot: \$9,000-15,000



DOMAINE DE LA ROMANÉE CONTI

RICHEBOURG

RICHEBOURG - Appellation d'origine contrôlée

J. M. Drouhin

de Villaine & Fils
Petits-Fils de J. M. Drouhin

ANNÉE 1947



ACHE



75% of the vineyard is constituted from grafts of the Romanée-Conti vineyard. The vineyard is a monopole, the Domaine acquiring what is, today, the La Tâche vineyard in 1933 and henceforth recognized as AC La Tâche in 1936. Why do I love La Tâche? Well, plums and roses and deep, plush velvet fruit is the reason. The texture is always thicker than Romanée-Conti.

Serena Sutcliffe, MW



LA TACHE



MONOPOLE
1959

MONOPOLE
1959

DOMAINE DE LA ROMANÉE-CONTI
PROPRIÉTAIRE A VOSNE-ROMANÉE (COTE-D'OR)
LA TACHE
APPELLATION . LA TACHE . CONTRÔLÉE
7-715 Bouteilles Récoltées
N° 1797
1959
H. de Villaine
L'ASSOCIÉ-GÉRANT
Mise en bouteille au domaine

DOMAINE DE LA ROMANÉE-CONTI
PROPRIÉTAIRE A VOSNE-ROMANÉE (COTE-D'OR)
LA TACHE
APPELLATION . LA TACHE . CONTRÔLÉE
7-715 Bouteilles Récoltées
1959 1861
H. de Villaine
L'ASSOCIÉ-GÉRANT
Mise en bouteille au domaine

DOMAINE DE LA ROMANÉE-CONTI
LA TACHE
LA TACHE - Appellation Contrôlée
J. M. Duvaux & Co
de Villaine & J. Chamaillard
Fils de J. M. Duvaux & Co
ANNÉE 1949 Seuls propriétaires

DOMAINE DE LA ROMANÉE-CONTI
LA TACHE
LA TACHE - Appellation Contrôlée
J. M. Duvaux & Co
de Villaine & J. Chamaillard
Fils de J. M. Duvaux & Co
ANNÉE 1949

MONOPOLE

1964

SOCIÉTÉ CIVILE DU DOMAINE DE LA ROMANÉE-CONTRE
PROPRIÉTAIRE A VOSNE-ROMANÉE (COTE-D'OR)

LA TACHE

APPELLATION . LA TACHE . CONTRÔLÉE

30.665 Bouteilles Récoltées

N° 23765

L'ASSOCIÉ-GÉRANT

ANNÉE 1964

H. de Villain

Mise en bouteille au domaine





La Tâche 1964

Domaine de la Romanée-Conti

Côte de Nuits, Grand Cru

Lot 53: u. 1x3cm, 1 level into the neck, BT #'s 27503, 27507, 1 BT missing monopole label, 1 stained monopole label, heavily damp-stained and scuffed labels, cracked wax capsules, 1 heavily stained capsule with signs of seepage, 1 wax capsule with small holes in wax on top, excellent color and clarity,
 Lot 54: u. 1x4cm, 1x4.5cm, 1x5cm, 1 level into the neck, Mise Du Domaine capsules, BT #'s 23765, 23771, 23773, 1 BT # obscured, 2 bottles missing monopole label, heavily damp-stained and scuffed labels, 3 partially torn and missing labels, labels stamped, "Interdiction d'Exporter aux USA et UK," excellent color and clarity

- | | | |
|-----------|-------------|--------------------------|
| 53 | 2 bts (owc) | per lot: \$5,000-7,500 |
| 54 | 4 bts (owc) | per lot: \$10,000-15,000 |

“I think it is almost unheard of that a cellar of such treasures can become available to anyone in the world who happens to be passionate about fine wines.

There really is no normal opportunity to get these wines, no matter how you try, and whatever means you might have. They are just not obtainable. It is something that stands on its own.”

SERENA SUTCLIFFE, MW

DOMAINE DE LA ROMANÉE-CONTI
RICHEBOURG
RICHEBOURG – Appellation Contrôlée

J. M. Duvault Blochet

*de Villaine & J. Chambon
Petits Fils de J. M. Duvault Blochet*

MAISON CIVILE DU DOMAINE DE LA ROMANÉE-CÔTÉ
PROPRIÉTÉ À VOSNE-ROMANÉE (CÔTE D'OR)

PRODUCE OF FRANCE

LA TACHE

APPELLATION LA TACHE CONTRÔLÉE

NE DE LA ROMANÉE-CÔTÉ

TACHE

Appellation Contrôlée

J. M. Drouhin & Fils

et J. Chambon

M. Durand & Fils

Château de la Romanée

Romanée

VIGNE ORIGINELLE FRANÇAISE
ROMANÉE-CÔTÉ - Vigne Originelle Française non Récoltée

J. M. Drouhin & Fils

de Villaine & Fils
Petit Tâche

La Tâche 1961

Domaine de la Romanée-Conti

Côte de Nuits, Grand Cru

Lot 55-56: The third digit on the labels has been painted out and pen-marked with a "6", Lot 55: 2 heavily damp-stained and scuffed labels, 1 damp-stained and scuffed label, 2 torn and partially missing labels, wax capsules cracked and slightly stained with very slight signs of seepage, excellent levels, color, and clarity, Lot 56: u. 2x3cm, 1 level into the neck, damp-stained and scuffed labels, labels stamped "Interdiction d'Exporter aux USA et UK," wax capsules cracked with very slight signs of seepage, excellent color and clarity

In 2018, at Robert Drouhin's generous table. A beautiful, damp Burgundian earth nose leads to such incredible finesse on the palate, with lingering flavours of heather and fruit. Total class reigns and such a display of sheer vinous illumination. Serena Sutcliffe, MW

55 3 bts (owc)

56 3 bts (owc)

per lot: \$5,000-7,500





DOMAINE DE LA ROMANÉE-CONTI

LA TACHE

LA TACHE – Appellation Contrôlée

J. M. Duvaux-Bloch

de Villaine & J. Chambon

Petits-Fils de J. M. Duvaux-Bloch

ANNÉE 1961

Seuls propriétaires

DOMAINE DE LA ROMANÉE-CONTI

LA TACHE

LA TACHE – Appellation Contrôlée

J. M. Duvaux-Bloch

de Villaine & J. Chambon

Petits-Fils de J. M. Duvaux-Bloch

ANNÉE 1961

DOMAINE DE LA ROMANÉE-CONTI

LA TACHE

LA TACHE – Appellation Contrôlée

J. M. Duvaux-Bloch

de Villaine & J. Chambon

Petits-Fils de J. M. Duvaux-Bloch

ANNÉE 1961

LA ROMANÉE-CONTI

LA TACHE

Appellation Contrôlée

J. M. Duvaux-Bloch

de Villaine & J. Chambon

Petits-Fils de J. M. Duvaux-Bloch

ANNÉE 1961

DOMAINE DE LA ROMANÉE-CONTI

LA TACHE

LA TACHE – Appellation Contrôlée

J. M. Duvaux-Bloch

de Villaine & J. Chambon

Petits-Fils de J. M. Duvaux-Bloch

ANNÉE 1961

La Tâche 1959

Domaine de la Romanée-Conti

Côte de Nuits, Grand Cru

Lots 57-60: Labels stamped "Interdiction d'Exporter aux USA et UK," "JD" branded on top of capsule. Lot 57: u. 3cm, BT # 1801, wax capsule stained, excellent appearance, color, and clarity, Lot 58: u. 3cm, BT # 1797, wax capsule stained and cracked, excellent appearance, level, color, and clarity, Lot 59: u. 4cm BT # 1799, wax capsule stained and cracked, excellent appearance, color, and clarity, Lot 60: u. 6.5cm, BT # 1800, sunken cork by 1cm, wax capsule stained, excellent appearance, color, and clarity

WA 90

57	1 mag (owc)
58	1 mag (owc)
59	1 mag (owc)
60	1 mag (owc)

per lot: \$10,000-15,000

“I particularly like La Tâche. I find them very soft, very subtle, very complex and especially delicate.”

ROBERT DROUHIN





SOCIÉTÉ CIVILE DU DOMAINE DE LA ROMANÉE-CONTI
PROPRIÉTAIRE À VOSNE-ROMANÉE (CÔTE-D'OR)

PRODUCE OF FRANCE

LA TACHE

APPELLATION . LA TACHE . CONTRÔLÉE

16720 Bouteilles Recoltées

N° 11071

L'ASSOCIÉ-GÉRANT

ANNEE 1956

H. de Villains

Mise en bouteille au domaine

REGISTRATION D'EXPORTATION AUX USA ET UK



La Tâche 1956

Domaine de la Romanée-Conti

Côte de Nuits, Grand Cru

u. 1x5cm, BT # 11071, label stamped "Interdiction d'Exporter aux USA et UK," cracked and partially missing wax capsule on top, excellent appearance, color, and clarity

61 1 bt (owc)

per lot: \$2,000-3,000





La Tâche 1952

Domaine de la Romanée-Conti

Côte de Nuits, Grand Cru

Lot 62: u. 3x3cm, 1 level into the neck, slightly scuffed labels, 1 stained monopole vintage neck label, 3 missing neck labels, labels stamped "Interdiction d'Exporter aux USA et UK," cracked wax capsules with three slight signs of seepage, very good appearance, excellent color and clarity, Lot 63: u. 1x3cm, 3x3.5cm, 3 stained labels, bottles missing monopole vintage neck labels, labels stamped "Interdiction d'Exporter aux USA et UK," cracked and stained wax capsules, 1 heavily stained capsule, 3 slight signs of seepage on top, very good appearance, excellent color and clarity

One of the greatest La Tâche vintages and one we have at home - so complex, so exciting, so gamey and spicy.

Serena Sutcliffe, MW

62 4 bts (owc)

63 4 bts (owc)

per lot: \$18,000-24,000

“One of the greatest La Tâche vintages
... so complex, so exciting, so gamey
and spicy.”

SERENA SUTCLIFFE, MW
ON LA TÂCHE, DRC 1952



DOMAINE DE LA ROMANÉE-CONTÉE

LA TACHE

LA TACHE - Appellation Contrôlée

J. M. Duvaux Blochet

de Villaine & J. Chambon

Fils de J. M. Duvaux Blochet

ANNÉE 1950

Seuls propriétaires

EXPOSÉ 1950



La Tâche 1950

Domaine de la Romanée-Conti

Côte de Nuits, Grand Cru

*u. 1x3.5cm, heavily damp-stained, scuffed, and torn label,
label stamped "Interdiction d'Exporter aux USA et UK,"
cracked wax capsule with slight sign of seepage on top,
excellent color and clarity*

64 1 bt (owc)

per lot: \$2,000-3,000

LOT 64



La Tâche 1949

Domaine de la Romanée-Conti

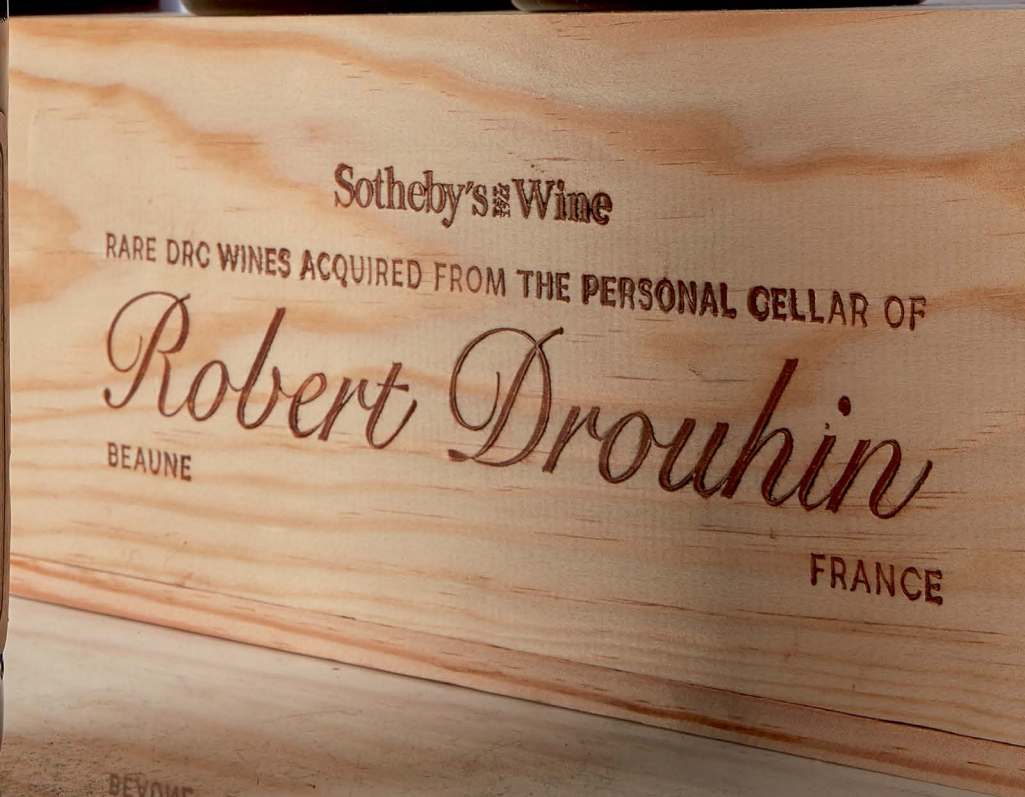
Côte de Nuits, Grand Cru

Lot 65: u. 1x5cm, 1x6cm, heavily damp-stained, scuffed and 1 torn and partially missing label, labels stamped "Interdiction d'Exporter aux USA et UK," wax capsules cracked with slight signs of seepage on top, excellent color and clarity, Lot 66:

u. 1x4cm, 2 levels into the neck, damp-stained, scuffed, and 2 torn and partially missing labels, wax capsules cracked with very slight signs of seepage on top, excellent color and clarity, Lot 67: u. 3x3cm, damp-stained, scuffed, and torn labels, 2 partially missing labels, labels stamped "Interdiction d'Exporter aux USA et UK," wax capsules cracked with very slight signs of seepage on top, excellent color and clarity

Now beautifully mature, with all the elegance and fruit of this most well-bred of vintages. Serena Sutcliffe, MW

65	2 bts (owc)	per lot: \$10,000-15,000
66	3 bts (owc)	
67	3 bts (owc)	per lot: \$15,000-20,000



BEAUNE

Robert Drouhin

DOMAINE DE LA ROMANÉE-CONTI
LA TACHE
LA TACHE - Appellation Contrôlée
J. M. Duvaux Blochet
de Villaine & J. Chambon
M. Fils de J. M. Duvaux Blochet
ANNÉE 1947

DOMAINE DE LA ROMANÉE-CONTI
LA TACHE
LA TACHE - Appellation Contrôlée
J. M. Duvaux Blochet
de Villaine & J. Chambon
M. Fils de J. M. Duvaux Blochet
ANNÉE 1947
Seuls propriétaires

Joseph Drouhin

La Tâche 1947

Domaine de la Romanée-Conti

Côte de Nuits, Grand Cru

*u. 2x3cm, damp-stained and scuffed labels, labels stamped
"Interdiction d'Exporter aux USA et UK," cracked wax
capsules with small holes in wax on top, excellent color and
clarity*

Very ripe, very seductive and extraordinarily rare nowadays.

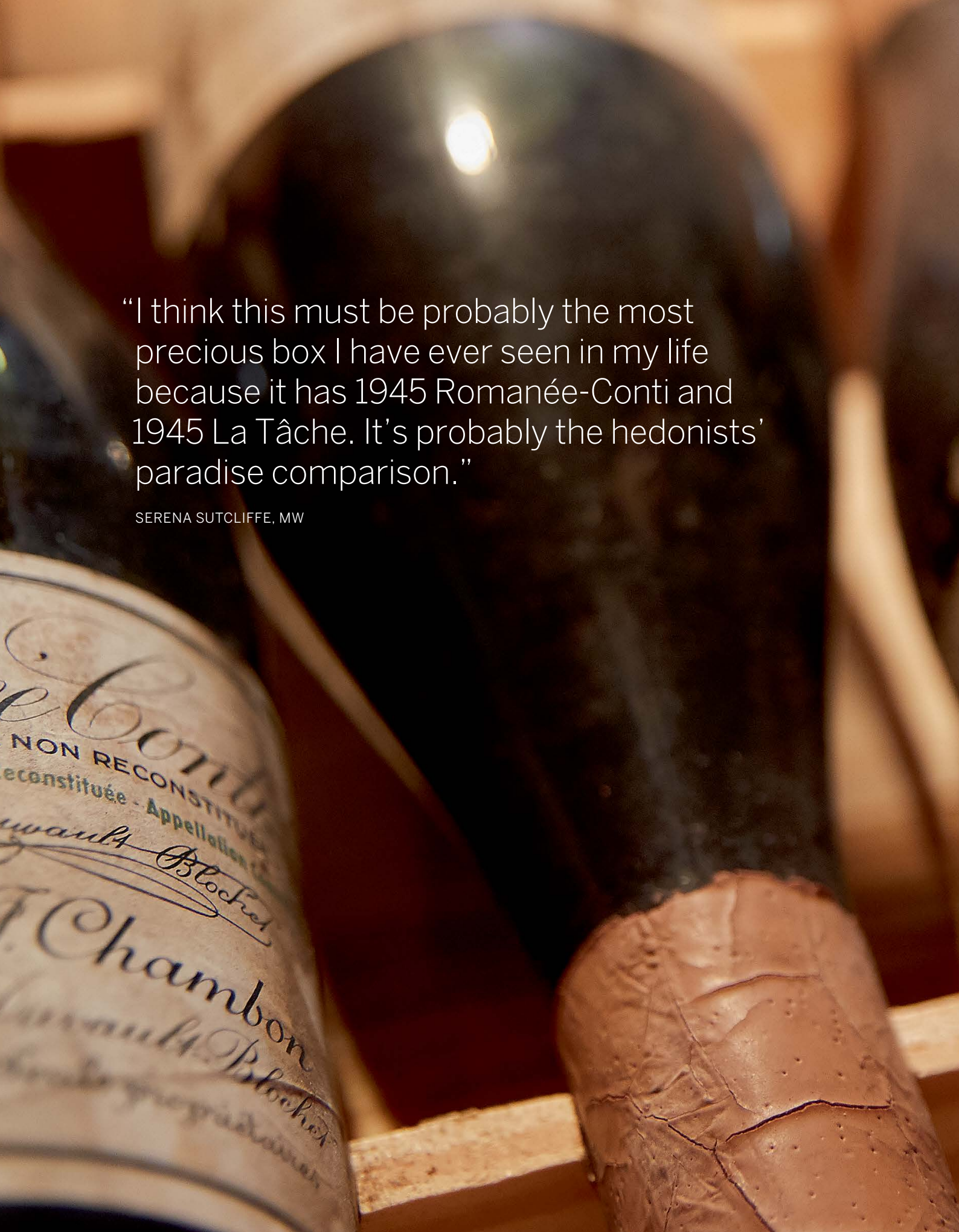
Serena Sutcliffe, MW

68 2 bts (owc)

per lot: \$7,000-10,000

“Very ripe, very seductive and
extraordinarily rare nowadays.”

SERENA SUTCLIFFE, MW
ON LA TÂCHE, DRC 1947



“I think this must be probably the most precious box I have ever seen in my life because it has 1945 Romanée-Conti and 1945 La Tâche. It’s probably the hedonists’ paradise comparison.”

SERENA SUTCLIFFE, MW

Combe
NON RECONSTITUÉE
reconstituée - Appellation
J. Chambon
J. Chambon

LA TACHE
APPellation LA TACHE CORMAILLON

Mise en Souteille au

MAI 1945



La Tâche 1945

Domaine de la Romanée-Conti

Côte de Nuits, Grand Cru

Lot 69: u. 7cm, heavily scuffed, stained, torn, faded, and partially missing label, 4 on label slightly obscured, label stamped "Interdiction d'Exporter aux USA et UK," cracked wax capsule with slight sign of seepage on top, sunken cork, excellent color and clarity, Lot 70: u. 1x4cm, 2 levels into the neck, heavily scuffed, stained, torn, and partially missing labels, labels stamped "Interdiction d'Exporter aux USA et UK," cracked wax capsules with slight signs of seepage and small holes in wax on top, excellent color and clarity, Lot 71: u. 1x5cm, 1x5.5cm, 1x6.5cm, heavily scuffed, stained, torn, faded and partially missing labels, labels stamped "Interdiction d'Exporter aux USA et UK," cracked wax capsules with small holes in wax and slight signs of seepage on top, sunken corks, excellent color and clarity

Great, sweet, superb undergrowth nose. Totally intoxicating. Candied cinnamon. Endlessly scented - reminded me of '42 and '43. So fascinatingly sweet and so intensely aromatic. Gloriously elegant. So noble and well-bred.

Serena Sutcliffe, MW

69	1 bt (owc)	per lot: \$6,000-9,000
70	3 bts (owc)	
71	3 bts (owc)	per lot: \$18,000-26,000

“Great, sweet, superb undergrowth nose. Totally intoxicating. Candied cinnamon. Endlessly scented - reminded me of '42 and '43. So fascinatingly sweet and so intensely aromatic. Gloriously elegant. So noble and well-bred.”

SERENA SUTCLIFFE, MW
ON LA TÂCHE, DRC 1945

La Tâche 1943

Domaine de la Romanée-Conti

Côte de Nuits, Grand Cru

Lot 72: u. 1x4.5cm, 1x6.5cm, 1942 labels with 3 pen marked over 2, heavily damp-stained, scuffed, partially torn, and missing labels, labels stamped "Interdiction d'Exporter aux USA et UK," cracked wax capsules with slight signs of seepage on top, 1 faded wax capsule, excellent color and clarity, Lot 73: u. 1x4cm, 1x4.5cm, 1x5cm, 1 bottle with different vintage printing on label, damp-stained, scuffed, stained, torn, and partially missing labels, 1 heavily damp-stained label, 2 torn and partially missing labels, one label missing "19" of vintage, labels stamped "Interdiction d'Exporter aux USA et UK," cracked wax capsules with slight signs of seepage on top, excellent color and clarity

Over twenty years older than the 1966, but what a family resemblance. Extraordinarily rich and essence-like bouquet, and yet pure "lace". Earthy, full, dense taste. More weight than the 1966 (1943 was a great year in Burgundy somewhat camouflaged by the war). Rich undergrowth, cherry kernels. Brilliant freshness. Serena Sutcliffe, MW

- 72** 2 bts (owc) per lot: \$7,000-10,000
- 73** 3 bts (owc) per lot: \$11,000-15,000

La Tâche 1942

Domaine de la Romanée-Conti

Côte de Nuits, Grand Cru

u. 6.5cm, Mis du Domaine capsule torn on top, excellent appearance, color, and clarity

So much of the quality of 1943 in this but in a more muted register and even more "lacy". Intense centre to it, as all great DRC wines. Extraordinary definition. Finesse. Finishes as the essence of Burgundy. Serena Sutcliffe, MW

- 74** 1 bt (owc) per lot: \$4,000-6,000

La Tâche 1941

Domaine de la Romanée-Conti

Côte de Nuits, Grand Cru

u. 5cm, cracked and slightly stained wax capsule, excellent appearance, color, and clarity

- 75** 1 bt (owc) per lot: \$3,000-4,000



DOMAINE DE LA ROMA

LA TACHE

LA TACHE - Appellation

J.M. Du

de Villaine & Fils

Petits-Fils de J.M. Du

ANNÉE 1943

DOMAINE DE LA ROMA

LA TACHE

LA TACHE - Appellation

J.M. Du

de Villaine & Fils

Petits-Fils de J.M. Du

ANNÉE 1942

Seu

DOMAINE DE

LA TACHE

LA TACHE - Appellation

J.M. Du

de Villaine

Petits-Fils de

ANNÉE 1941

ROM

CO

ANNEE

NTU

The care lavished on Romanée-Conti is shown to all the wines of the Domaine, but the breed and refinement in the taste of Romanée-Conti would point to an indefinable "something extra" in this 1.80 ha plot. Tradition is respected (Romanée-Conti is always vinified in wooden vat number 17 which dates from 1862), but not blindly revered for its own sake. But Romanée-Conti is more than the total of a mass of intricate manoeuvres - it is the pure silk and intoxicating aromas and flavours that appear, as if by magic, from mere marl and limestone.

Serena Sutcliffe, MW



ROMANEE-CONTI

Romanée Conti
VIGNE ORIGINELLE FRANÇAISE NON RECONSTITUÉE - AN
ROMANÉE-CONTI - Vigne Originelle Française non Reconstituée
J M Duvaux
de Villaine & J. Cha
Petits-Fils de J. M. Duvaux
ANNÉE 1938
Seuls prop

Romanée Conti
VIGNE ORIGINELLE FRANÇAISE NON RECONSTITUÉE - AN
ROMANÉE-CONTI - Vigne Originelle Française non Reconstituée
J M Duvaux
de Villaine & J. Cha
Petits-Fils de J. M. Duvaux
ANNÉE 1938
Seuls prop

Romanée Conti
VIGNE ORIGINELLE FRANÇAISE NON RECONSTITUÉE - AN
ROMANÉE-CONTI - Vigne Originelle Française non Reconstituée - An
J M Duvaux
de Villaine & J. Cha
Petits-Fils de J. M. Duvaux
ANNÉE 1945
Seuls prop

Romanée Conti 1964

Domaine de la Romanée-Conti

Côte de Nuits, Grand Cru

u. 1x7cm, BT #'s 06902, 06905, heavily damp-stained, scuffed, faded, partially torn, and missing labels, Domaine wax with DRC branding on capsules, cracked capsules on top, 1 BT with slightly lighter color, 1 excellent level and color
Vintage started 4th October (38 hl/ha) Meaty and muscular, yet also violet scented. Strong bonework and very good acidity balance. A purist's Romanée-Conti.

Serena Sutcliffe, MW

76 2 bts (owc)

per lot: \$15,000-20,000



SOCIÉTÉ CIVILE DU DOMAINE DE LA ROMANÉE-CONTI
 PROPRIÉTAIRE À VOSNE-ROMANÉE (CÔTE-D'OR)

ROMANÉE-CONTI

APPELLATION ROMANÉE-CONTI

9.145 Bouteilles

N° 06902

ANNÉE 1964

Mise en bouteille



SOCIÉTÉ CIVILE DU DOMAINE DE LA ROMANÉE-CONTI
 PROPRIÉTAIRE À VOSNE-ROMANÉE (CÔTE-D'OR)

ROMANÉE-CONTI

APPELLATION ROMANÉE-CONTI

9.145 Bouteilles

N° 06905

ANNÉE 1964

H. d. W.



LA TACHE
DOMAINE DE LA TACHE
LA TACHE
LA TACHE

“I hope that those who buy these wines will know how scarce they are, how good the wines should be and I only hope they will drink them with friends who can appreciate it the right way.”

ROBERT DROUHIN



Sotheby's Fine Wine

RARE DRC WINES ACQUIRED FROM THE PERSONAL CELLAR OF

Robert Drouhin

FRANCE

BEAUNE

MAISON CIVILE DU DOMAINE DE LA ROMANÉE-CONTI
PROPRIÉTAIRE VOSNE-ROMANÉE (COTE-D'OR)
ROMANÉE-CONTI
APPELLATION ROMANÉE-CONTI CONTRÔLÉE
ANNÉE 912

Romanée Conti 1962

Domaine de la Romanée-Conti

Côte de Nuits, Grand Cru

Lot 77: Different style label with no bottle number, 6 torn and missing from label, cellar records confirm vintage, scuffed, stained, torn and partially missing label, cracked wax capsule with small holes in wax on top, excellent level, color, and clarity, Lot 78: u. 1x6.5cm, 1x7.5cm, heavily damp-stained, scuffed, and torn labels, 1 label mostly missing and without vintage and BT #, vintage neck label stained and torn, but vintage legible, 1 label partially missing, BT # 7451 with vintage neck label torn and vintage illegible, labels stamped "Interdiction exporter aux USA et UK," cracked and partially missing wax capsules, 1 wax capsule missing on top, DRC branding very slightly visible on top of one capsule, excellent color and clarity

77	1 bt (owc)	per lot: \$8,000-12,000
78	2 bts (owc)	per lot: \$16,000-24,000

Romanée Conti 1961

Domaine de la Romanée-Conti

Côte de Nuits, Grand Cru

Lot 79: u. 1x5cm, BT # 5355, bottle without vintage neck label, heavily damp-stained, scuffed, and faded label vintage only slightly visible on label, labels stamped "Interdiction d'Exporter aux USA et UK," cracked wax capsule missing on top, excellent color and clarity, Lot 80: u. 1x4.5cm, 1x5.5cm, BT #'s 5371, 5376, 1 BT without vintage neck label, heavily damp-stained, scuffed, faded, and askew labels, vintage and BT # only slightly visible, heavily damp-stained and scuffed vintage neck label, labels stamped "Interdiction d'Exporter aux USA et UK," cracked wax capsules, remnants of sticker adhered to one capsule, 1 very slight sign on seepage on top of capsule, excellent color and clarity

Vintage started 7th October (25 hl/ha) Deep and thick to rim. So intense. Unbelievably rich fruit. Heady. Reaches all corners of the nose. Spice bazaar. Taste: rich, liqueur, sweet, soft, less "nerveux" than the '64. Serena Sutcliffe, MW

79	1 bt (owc)	per lot: \$9,000-14,000
80	2 bts (owc)	per lot: \$18,000-24,000

“Deep and thick to rim. So intense. Unbelievably rich fruit. Heady. Reaches all corners of the nose. Spice bazaar. Taste: rich, liqueur, sweet, soft.”

SERENA SUTCLIFFE, MW
ON ROMANÉE CONTI 1961

SOCIÉTÉ CIVILE DU DOMAINE
PROPRIÉTAIRE À VOSNE-ROMANÉE

ROMANÉE

APPELLATION ROMANÉE

6.50 Bouteille

No. *DF* 05370

ANNÉE 1961

Mise en bouteille



SOCIÉTÉ CIVILE DU DOMAINE
PROPRIÉTAIRE A VOSNE-RO...

ROMANÉE

APPELLATION ROMANÉE

6992 Bouteilles

No 00045

ANNÉE 1959

Mise en bouteille

SOCIÉTÉ CIVILE DU DOMAINE
PROPRIÉTAIRE A VOSNE-RO...

ROMANÉE

APPELLATION ROMANÉE

6992 Bouteilles

No 00046

ANNÉE 1959

Mise en bouteille

SOCIÉTÉ CIVILE DU DOMAINE DE LA ROMANÉE-CONTI
PROPRIÉTAIRE A VOSNE-ROMANÉE (COTE-D'OR)

ROMANÉE-CONTI

APPELLATION ROMANÉE-CONTI CONTRÔLÉE

6992 Bouteilles

No 00047

ANNÉE 1959

Mise en bouteille au domaine

Sotheby's
WINE ACQUIRED FROM
BEAUNE
Robert
Sotheby's
WINE ACQUIRED FROM
Robert

Romanée Conti 1959

Domaine de la Romanée-Conti

Côte de Nuits, Grand Cru

Lot 81: u. 1x3cm, 1x4cm, BT # 946, 1 BT # obscured, "9" pen marked on labels over white paint, heavily damp-stained, scuffed, torn, and partially missing labels, labels stamped "Interdiction d'Exporter aux USA et UK," cracked wax capsules with small holes and slight signs of seepage on top, excellent color and clarity, Lot 82: u. 1x3.5cm, 1x4cm, BT # 945, 947, "9" pen marked on labels over white paint, heavily damp-stained, scuffed, torn, and partially missing labels, labels stamped "Interdiction d'Exporter aux USA et UK," cracked wax capsules with small holes and 1 slight signs of seepage on top, excellent color and clarity

Vintage started 26th September (40 hl/ha) Rich coffee & undergrowth on the nose, cocoa on the palate. Mature. Very classy on its last outing. Serena Sutcliffe, MW

81 2 bts (owc)

82 2 bts (owc)

per lot: \$13,000-18,000

“Romanée-Conti combines the delicacy of La Tâche and the structure of Richebourg. In the fragrance it is close to perfection. You have to wait for Romanée-Conti. You have to have patience and then it comes out in full.”

ROBERT DROUHIN

Romanée Conti 1954

Domaine de la Romanée-Conti

Côte de Nuits, Grand Cru

u. 1x5cm, 1x6.5cm, BT # 5200, 5201, heavily damp-stained, scuffed, torn, and partially missing labels, 1 label torn on vintage, vintage neck labels stained, scuffed, torn, and partially missing, 1 vintage neck label illegible, labels stamped "Interdiction d'Exporter aux USA et UK," Domaine wax, DRC branding partially visible on top of wax capsules, slightly cracked wax capsules partially missing on top, excellent color and clarity

83 2 bts (owc)

per lot: \$20,000-28,000

ÉTÉ CIVILE DU DOMAINE
PROPRIÉTAIRE A VOSNE-RE...

ROMANÉE

APPELLATION . ROMA

7144

Bou...

No

052

ANNÉE 1954

INTERDICTION

Mise en

ROMANÉE

EXPORTER-CONTI

201

Recollis



CONTI
CONTI
ANNÉE 1945
851
ANNÉE 1945

Ron J. Cruppin
VIGNE ORIGINELLE FRANÇAISE NON RECONSTITUÉE
RON J. CRUPPIN - Vigne Originelle - France
Société Civile du Propriétaire
J. Cruppin
Sous Propriété
ANNÉE 1945

DES ROIS
J. Cruppin
ANNÉE 1945

SOCIÉTÉ CIVILE DU PROPRIÉTAIRE
RON
APPELLA

Romanée Conti 1945

Domaine de la Romanée-Conti

Côte de Nuits, Grand Cru

Lot 84: u. 4.5cm, heavily damp-stained, scuffed, torn, and partially missing labels, 1945 typed on label, cracked and chipped wax capsule with very slight signs of seepage on top, wax capsule has small holes on top, excellent color and clarity, Lot 85: u. 6cm, heavily damp-stained and scuffed label, 1945 typed on label, cracked and chipped wax capsule with slight signs of seepage on top, wax capsule has small holes on top, excellent color and clarity

Vintage started 2nd October (2.5 hl/ha - 600 bottles produced) Rare and wonderful. The Romanée Conti vineyard was uprooted after the '45 vintage. The best bottles are so concentrated and exotic, with seemingly everlasting power - a wine at peace with itself. Serena Sutcliffe, MW

84 1 bt (owc)

85 1 bt (owc)

per lot: \$22,000-32,000

“Rare and wonderful. The Romanée Conti vineyard was uprooted after the ‘45 vintage. The best bottles are so concentrated and exotic, with seemingly everlasting power - a wine at peace with itself.”

SERENA SUTCLIFFE, MW
ON ROMANÉE CONTI 1945



Romanée-Conti
 VIGNE ORIGINELLE FRANÇAISE NON RÉCONSTITUÉE
 ROMANÉE-CONTI - Vigne Originelle Française non Reconstituée - Appellation Contrôlée
J. M. Durvault Blochet
 de Tillaine & J. Chambon
 Petits-Fils de J. M. Durvault-Bloch
 ANNEE 1945
 Seuls propriétaires



J. Drouhin
Beaune

Romanée-Conti

VIGNE ORIGINELLE FRANÇAISE NON RECONSTITUÉE

ROMANÉE-CONTI - Vigne Originelle Française non Reconstituée - Appellation Contrôlée

J. M. Durault-Blochès

de Villaine & J. Chambon

Petits-Fils de J. M. Durault-Blochès

ANNÉE 1943

Seuls propriétaires



Romanée Conti 1943

Domaine de la Romanée-Conti

Côte de Nuits, Grand Cru

u. 5cm, damp-stained and scuffed label, "Reserve des Anciens Celliers J. Drouhin" neck label, cracked, chipped, and stained wax capsule, very good appearance, slightly lighter color, excellent clarity

86 1 bt (owc)

per lot: \$10,000-15,000

Romanée Conti 1938

Domaine de la Romanée-Conti

Côte de Nuits, Grand Cru

u. 1x4cm, 1x6cm, cracked wax capsules, 1 capsule partially torn and missing on top, wax capsule has small holes on top, 1 slight sign of seepage, excellent color and clarity

Vintage started in October Very deep yellow colour. Coffee and liquorice on the nose. Smoky, aromatic, chocolate - lead pencil! Serena Sutcliffe, MW

87 2 bts (owc)

per lot: \$20,000-30,000

Romanée Conti

VIGNE ORIGINELLE FRANÇAISE NON RECONSTITUÉE
ROMANÉE-CONTI - Vigne Originelle Française non Reconstituée - Appellation

J. M. Duvaux & Bloch

de Villaine & J. Chamb

Petits-Fils de J. M. Duvaux & Bloch

ANNÉE 1938

Seuls propriétaires

Romanée Conti

VIGNE ORIGINELLE
ROMANÉE-CONTI - Vigne

de Villaine

Petits-Fils

ANNÉE



Romanée Conti

VIGNE ORIGINELLE FRANÇAISE NON RECONSTITUÉE
ROMANÉE-CONTI - Vigne Originelle Française non Reconstituée - Appellation Contrôlée

J. M. Duvault-Blochet

de Villaine & J. Chambon
Petits Fils de J. M. Duvault-Blochet

ANNÉE 1937 Seuls propriétaires

Romanée Conti 1937

Domaine de la Romanée-Conti

Côte de Nuits, Grand Cru

Lot 88: Slightly stained label, cracked wax capsule, wax capsule has small holes on top, otherwise excellent level, appearance, color, and clarity

Served at a pre-70th birthday bash (theirs, not mine!) by very generous friends. Incredible projection of super scent. Unbelievable taste of rich fruit, pure Christmas pudding. The longest finish in the world. Totally enchanting - I nurtured my glass all evening. Serena Sutcliffe, MW

88 1 bt (owc)

per lot: \$13,000-18,000

“Incredible projection of super scent. Unbelievable taste of rich fruit, pure Christmas pudding. The longest finish in the world. Totally enchanting - I nurtured my glass all evening.”

SERENA SUTCLIFFE, MW
ON ROMANÉE CONTI 1937

Romanée Conti

VIGNE ORIGINELLE FRANÇAISE NON RECONSTITUÉE
ROMANÉE-CONTI - Vigne Originelle Française non Reconstituée - Appellation Contrôlée

J. M. Duvaux Blochet

de Villaine & J. Chambon
Petits-Fils de J. M. Duvaux Blochet

ANNÉE 1937

Seuls propriétaires

ROMANEE-CONTI 1937 MAGNUMS

“There are still a few bottles of 1937 in the world but, perhaps, possibly no other magnum of 1937 and in perfect condition, as they are here.”

ROBERT DROUHIN

Romanée Conti 1937

Domaine de la Romanée-Conti

Côte de Nuits, Grand Cru

Lot 89: Damp-stained, scuffed, torn, and partially missing label, cracked wax capsule with very slight sign of seepage on top, excellent level, color, and clarity, Lot 90: Damp-stained, scuffed, torn, and partially missing label, cracked wax capsule with 6 small holes in wax on top, excellent level, color, and clarity, Lot 91: Heavily damp-stained, scuffed, torn, and partially missing label, vintage obscured as "7" is missing, cellar records confirm vintage, cracked wax capsule with 4 small holes in wax on top, excellent level, color and clarity
Served at a pre-70th birthday bash (theirs, not mine!) by very generous friends. Incredible projection of super scent. Unbelievable taste of rich fruit, pure Christmas pudding. The longest finish in the world. Totally enchanting - I nurtured my glass all evening. Serena Sutcliffe, MW


- 89** 1 mag (owc)
- 90** 1 mag (owc)
- 91** 1 mag (owc)

per lot: \$30,000-40,000

Romanée
VIGNE ORIGINELLE FRANÇAISE
ROMANÉE-CONTI - Vigne Originelle Fine
J. M.
de Villaine
Petits-Fils de J. M.
ANNÉE 1937

Romanée
de Villaine
ANNÉE 1937

Romanée
de Villaine
ANNÉE 1937



In a world where so much is ephemeral, it is immensely reassuring that there are houses, and families, such as Drouhin. For Burgundy lovers, this name is a lodestar. Founded in 1880 by Joseph Drouhin, the house is now run by his great grandchildren, with their father, Robert Drouhin, the doyen of the family. Taking charge of the house in 1957, no one in Burgundy has more experience than this inspiring man who has fiercely guarded the quality and integrity of his wines. The Domaine now has 73 hectares, with vineyards in Chablis, the Côte de Nuits, the Côte de Beaune and the Côte Chalonnaise, the majority of which being Grand and Premier Cru. The Drouhin négoce business buys in grapes to turn them into wine with the same care as is given to the domain wines. The signature of a Drouhin wine is its purity and fidelity to its appellation, with great scent, long flavour, elegance and finesse.

Serena Sutcliffe, MW

MAISON JOSEPH DROUHIN







GRANDS VINS DE BOURGOGNE
1962

Joseph Drouhin
RÉCOLTE DU DOMAINE
BONNES-MARES
GRAND CRU

APPELLATION CONTRÔLÉE
MIS EN BOUTEILLE PAR JOSEPH DROUHIN
ÉLEVÉUR À BEAUNE, CÔTE - D'OR, FRANCE, AUX CHATEAUX
DES ROIS DE FRANCE ET DES DUCS DE BOURGOGNE
FRANCE
13% vol.

GRANDS VINS DE BOURGOGNE
1961

Joseph Drouhin
RÉCOLTE DU DOMAINE
MUSIGNY
GRAND CRU

APPELLATION CONTRÔLÉE
MIS EN BOUTEILLE PAR JOSEPH DROUHIN
ÉLEVÉUR À BEAUNE, CÔTE - D'OR, FRANCE, AUX CHATEAUX
DES ROIS DE FRANCE ET DES DUCS DE BOURGOGNE
FRANCE
13% vol.

GRANDS VINS DE BOURGOGNE
1959

Joseph Drouhin
RÉCOLTE DU DOMAINE
CLOS DE LA ROCHE
GRAND CRU

APPELLATION CONTRÔLÉE
MIS EN BOUTEILLE PAR JOSEPH DROUHIN
ÉLEVÉUR À BEAUNE, CÔTE - D'OR, FRANCE, AUX CHATEAUX
DES ROIS DE FRANCE ET DES DUCS DE BOURGOGNE
FRANCE
13% vol.

75cl

GRANDS VINS DE BOURGOGNE
1961

Joseph Drouhin
RÉCOLTE DU DOMAINE
SIGNY
GRAND CRU

APPELLATION CONTRÔLÉE
MIS EN BOUTEILLE PAR JOSEPH DROUHIN
ÉLEVÉUR À BEAUNE, CÔTE - D'OR, FRANCE, AUX CHATEAUX
DES ROIS DE FRANCE ET DES DUCS DE BOURGOGNE
FRANCE
13% vol.

GRIOTTE CHAMBERTIN



Located next to Chambertin Clos de Bèze, it is of a more subtle character, soft, fruity, silky, elegant. Griotte-Chambertin is one of the smallest Grands Crus of Burgundy.

Robert Drouhin

Griotte Chambertin 1962

Joseph Drouhin

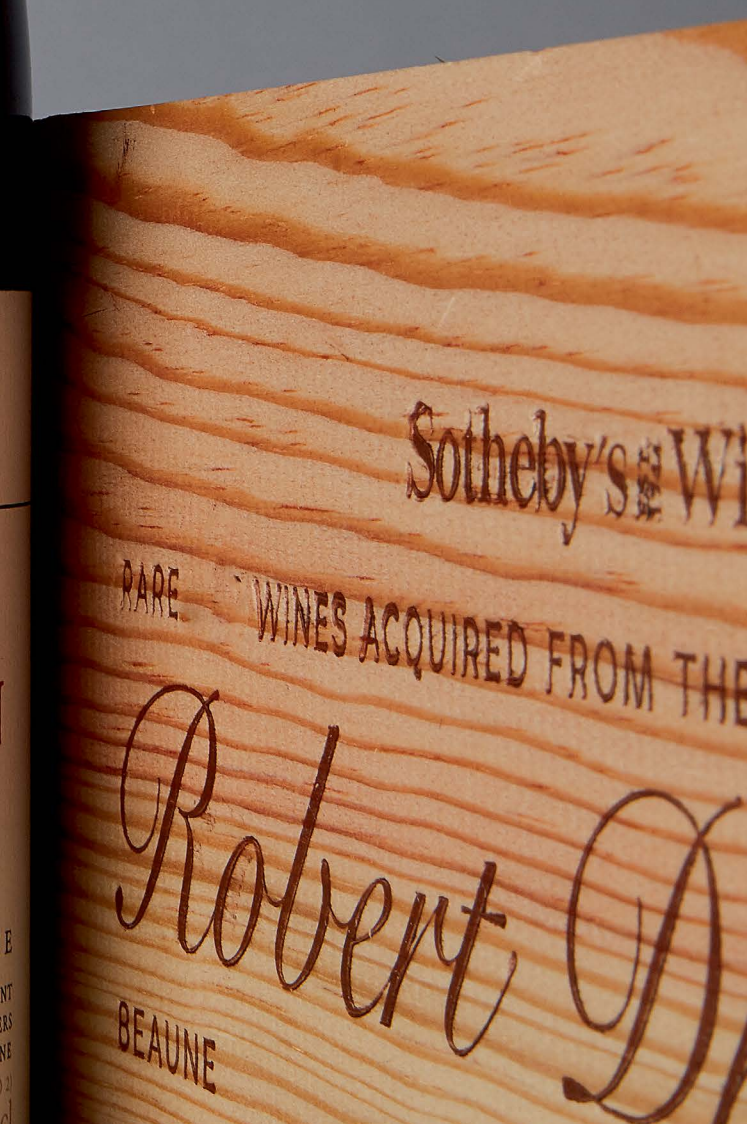
Côte de Nuits, Grand Cru

Lot 92: u. 2x3cm, 4x3.5cm, slightly scuffed labels, wax capsules cracked, chipped and partially missing, "JD" visible on top of all capsules, otherwise excellent appearance, color, and clarity, Lot 93: u. 2x3cm, 1x3.5cm, 1x4cm, 1x5.5cm, 1 level into the neck, 2 slightly scuffed labels, cracked, chipped and partially missing wax capsules, "JD" visible on top of 5 capsules, excellent appearance, color and clarity

92 6 bts (owc)

93 6 bts (owc)

per lot: \$6,000-9,000



LOTS 92-93

“Robert Drouhin epitomizes for me everything that is magnificent about Burgundy. His attitude, his wonderful integrity, his searching mind and his direct approach.

This is a man who loves his region, adores his wines but also has committed to increasing, if anyone could, the reputation of Burgundy, advancing it around the world, so that more and more people understand and love great Burgundy as much as he does. It has been a privilege to know Robert over all these years.”

SERENA SUTCLIFFE, MW



Clos de la Roche 1959

Joseph Drouhin

Côte de Nuits, Grand Cru

Lot 94: u. 2x3.5cm, 2x4cm, 1x4.5cm, 1x5.5cm, 4 slightly scuffed labels, cracked, chipped, stained and partially missing wax capsules, "JD" visible on top of 3 capsules, excellent appearance, color, and clarity, Lot 95: u. 1x3cm, 1x3.5cm, 1x4cm, 2x5cm, 1x5.5cm, 3 nicked labels, slightly scuffed labels, stained, cracked, chipped and partially missing wax capsules, "JD" visible on top of 2 capsules, excellent appearance, color, and clarity

94 6 bts (owc)

95 6 bts (owc)

per lot: \$4,000-6,000



LOTS 94-95

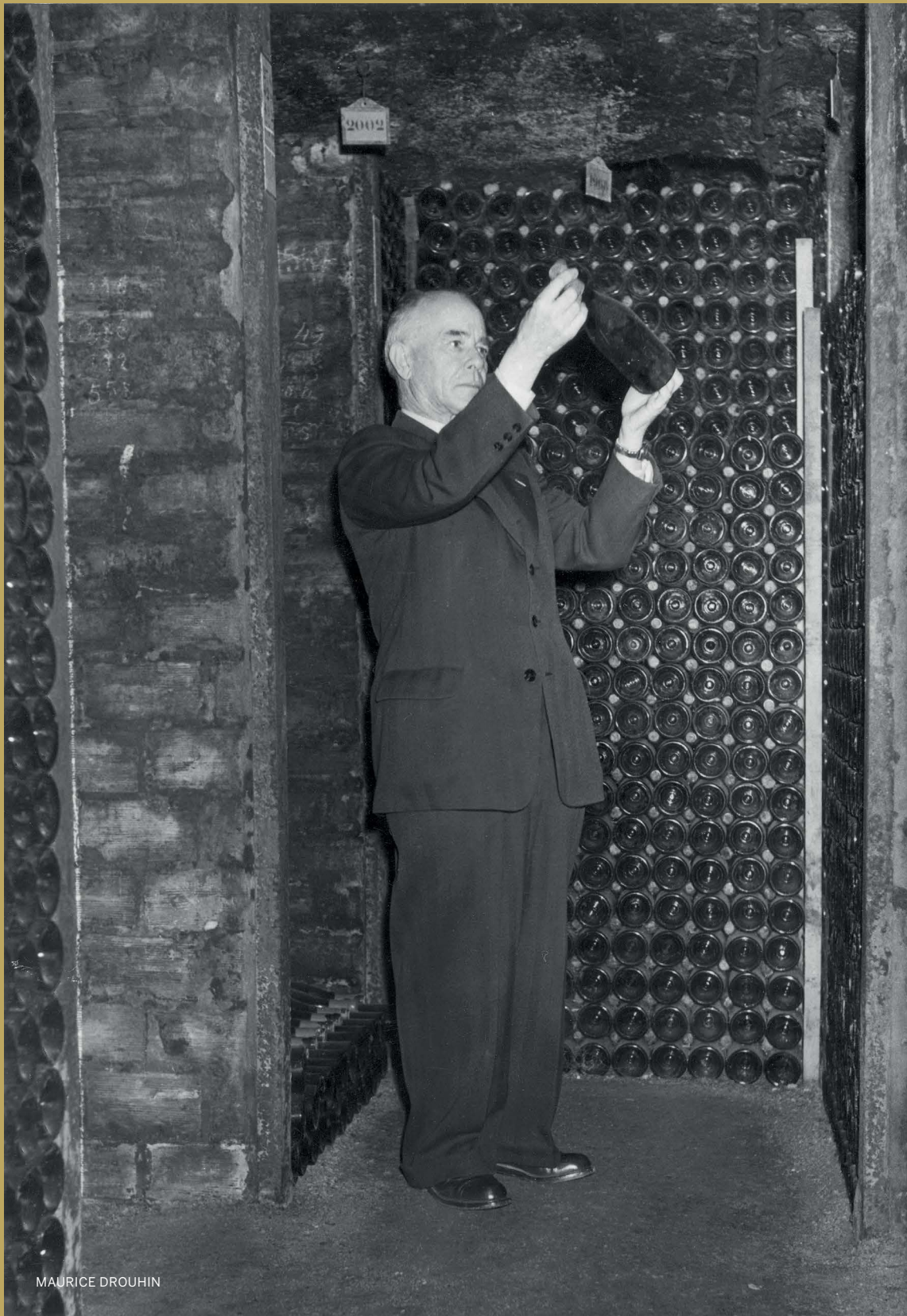
CLOS DE LA ROCHE



Located not far away from Chambertin, it shows the same structure and is well known for its complexity. No historical event is linked to this terroir and its reputation as Grand Cru is purely due to its essential qualities. In 1959 it benefitted from ideal climatic conditions and all grapes were ripe and perfectly healthy.

Robert Drouhin

THE DROUHIN FAMILY



MAURICE DROUHIN



ROBERT DROUHIN



FREDERIC DROUHIN, PHILIPPE DROUHIN, VÉRONIQUE DROUHIN-BOSS, LAURENT DROUHIN

BONNES MARES

Joseph Drouhin®

RÉCOLTE DU DOMAINE

BONNES-MARES
GRAND CRU



www.drouhin.com
13% vol.

APPELLATION CONTRÔLÉE
MIS EN BOUTEILLE PAR JOSEPH DROUHIN NÉGOCIANT
ÉLEVEUR A BEAUNE, CÔTE - D'OR, FRANCE, AUX CELLIERS
DES ROIS DE FRANCE ET DES DUCS DE BOURGOGNE
CONTAINS SULPHITES (SO₂) 75cl

FRANCE



Bonnes Mares is part of the same original estate as Musigny. Maison Joseph Drouhin purchased this vineyard in 1961. The vines had been planted around 1930. Bonnes Mares generally shows a firm structure linked to complexity, has an extraordinary ageing capacity.

Robert Drouhin

Bonnes Mares 1962

Joseph Drouhin

Côte de Nuits, Grand Cru

Lot 96: Modern "Mise en Joseph Drouhin" capsules, 1 loose capsule reveals Mise J. Drouhin on cork, 2 slightly stained labels, otherwise excellent levels, appearance, color, and clarity, Lot 97: u. 1x3cm, 1x4cm, 1x4.5cm, 3 levels into the neck, 1 slightly stained label, 2 bottles with modern "Mise Joseph Drouhin" capsules, 4 bottles with wax capsules with "JD" visible on top, wax capsules are chipped, cracked, stained, and partially missing, otherwise excellent appearance, color, and clarity, Lot 98: u. 1x3cm, 1x3.5cm, 1x4cm, 1x5cm, 2 levels into the neck, cracked chipped, stained, and partially missing wax capsules, "JD" visible on top of 5 capsules, otherwise excellent appearance, color, and clarity

96 6 bts (owc)

97 6 bts (owc)

98 6 bts (owc)

per lot: \$6,000-9,000

LOTS 96-98

MUSIGNY

DOMAINE

J. DROUHIN



Joseph Drouhin
MAISON FONDÉE EN 1838
MUSIGNY
GRAND CRU
APPELLATION D'ORIGINE PROTÉGÉE
CANTON DE BEAUNE
CÔTE D'OR

Joseph Drouhin

AUX CELLIERS DES ROIS DE FRANCE ET DES DUCS DE BOURGOGNE A BEAUNE

Joseph Drouhin

AUX CELLIERS DES ROIS DE FRANCE ET DES DUCS DE BOURGOGNE A BEAUNE

Musigny 1961

Joseph Drouhin

Côte de Nuits, Grand Cru

Lot 99: u. 1x3cm, 1x3.5cm, 2x4cm, 1x4.5cm, 1x5cm, wax capsules with Maison Joseph Drouhin crest on top, scuffed capsules, otherwise excellent appearance, color, and clarity.
Lot 100: u. 2x4cm, 2x4.5cm, 1x5cm, 1x5.5cm, wax capsules with Maison Joseph Drouhin crest on top, scuffed capsules, otherwise excellent appearance, color, and clarity

In 2018, at lunch with Robert Drouhin. A heady, 'inebriating' bouquet of total delight. Glycerol, rich, liqueur-like taste, with huge brambly flavours. This touches every corner of olfactory sensation - truly magical. Serena Sutcliffe, MW

99 6 bts (owc)

100 6 bts (owc)

per lot: \$9,000-12,000

End of Sale



LOTS 99-100

MUSIGNY



One of the most prestigious Grands Crus of Burgundy, famous for its fruitiness and complexity. Joseph Drouhin was fortunate to acquire this estate precisely in 1961. The vines had been planted in 1930, which contributes to the longevity of the wine.

Robert Drouhin



Joseph Drouhin
FRANCE
GRANDS BOURGOGNES

Joseph Drouhin
FRANCE
GRANDS BOURGOGNES

Joseph Drouhin
FRANCE
GRANDS BOURGOGNES

Joseph Drouhin
FRANCE
GRANDS BOURGOGNES

Joseph Drouhin
FRANCE
GRANDS BOURGOGNES

Joseph Drouhin
AUX CELLIERS DES ROIS DE FRANCE ET DES DUCS DE BOURGOGNE

Joseph Drouhin
AUX CELLIERS DES ROIS DE FRANCE ET DES DUCS DE BOURGOGNE

Joseph Drouhin
AUX CELLIERS DES ROIS DE FRANCE ET DES DUCS DE BOURGOGNE

Joseph Drouhin
AUX CELLIERS DES ROIS DE FRANCE ET DES DUCS DE BOURGOGNE

Joseph Drouhin
AUX CELLIERS DES ROIS DE FRANCE ET DES DUCS DE BOURGOGNE



Drouhin
BOURGOGNE A BEAUNE

Drouhin
DES DUCS DE BOURGOGNE A BEAUNE

Drouhin
DE BOURGOGNE A BEAUNE

Drouhin
OGNE A BEAUNE

Drouhin
OGNE A BEAUNE

Drouhin
RICHEBOURG
1981

1981

TEPE
DROU

MAIN INDEX

BURGUNDY RED

1937

Romanée Conti, Domaine de la Romanée-Conti 88, 89-91

1938

Romanée Conti, Domaine de la Romanée-Conti 87

1941

La Tâche, Domaine de la Romanée-Conti 75

1942

La Tâche, Domaine de la Romanée-Conti 74

1943

La Tâche, Domaine de la Romanée-Conti 72, 73
Romanée Conti, Domaine de la Romanée-Conti 86

1945

La Tâche, Domaine de la Romanée-Conti 69, 70-71
Romanée Conti, Domaine de la Romanée-Conti 84-85

1947

La Tâche, Domaine de la Romanée-Conti 68
Richebourg, Domaine de la Romanée-Conti 48, 49-52

1949

La Tâche, Domaine de la Romanée-Conti 65, 66-67

1950

La Tâche, Domaine de la Romanée-Conti 64

1952

La Tâche, Domaine de la Romanée-Conti 62-63
Richebourg, Domaine de la Romanée-Conti 35, 36-47

1954

Richebourg, Domaine de la Romanée-Conti 34
Romanée Conti, Domaine de la Romanée-Conti 83

1955

Richebourg, Domaine de la Romanée-Conti 33

1956

La Tâche, Domaine de la Romanée-Conti 61
Richebourg, Domaine de la Romanée-Conti 32

1957

Grands Echézeaux, Domaine de la Romanée-Conti 5

1959

Clos de la Roche, Joseph Drouhin 94-95
Echézeaux, Domaine de la Romanée-Conti 1

La Tâche, Domaine de la Romanée-Conti 57-60

Richebourg, Domaine de la Romanée-Conti 22-31
Romanée Conti, Domaine de la Romanée-Conti 81-82

1961

Grands Echézeaux, Domaine de la Romanée-Conti 3-4
La Tâche, Domaine de la Romanée-Conti 55-56
Musigny, Joseph Drouhin 99-100
Richebourg, Domaine de la Romanée-Conti 12-21
Romanée Conti, Domaine de la Romanée-Conti 79, 80

1962

Bonnes Mares, Joseph Drouhin 96-98
Grands Echézeaux, Domaine de la Romanée-Conti 2
Griotte Chambertin, Joseph Drouhin 92-93
Richebourg, Domaine de la Romanée-Conti 11
Romanée Conti, Domaine de la Romanée-Conti 77, 78

1964

La Tâche, Domaine de la Romanée-Conti 53, 54
Richebourg, Domaine de la Romanée-Conti 6, 7-8, 9-10
Romanée Conti, Domaine de la Romanée-Conti 76

SPECIAL FORMAT INDEX

MAGNUM

BURGUNDY RED

1937

Romanée Conti, Domaine de la Romanée-Conti 89-91

1959

La Tâche, Domaine de la Romanée-Conti 57-60



DOMAINE DE LA ROMANÉE-CONTI
RICHEBOURG
Appellation Contrôlée

DOMAINE DE LA ROMANÉE-CONTI
ROMANÉE-CONTI
Appellation Contrôlée

MAISON FONDÉE EN 1838
PROPRIÉTÉ DU DOMAINE DE LA ROMANÉE-CONTI
PRODUCE OF FRANCE
LA TACHE
APPELLATION LA TACHE CONTRÔLÉE
ANNÉE 1945

MAISON FONDÉE EN 1838
DOMAINE DE LA ROMANÉE-CONTI
TACHE
Appellation Contrôlée
J. Chambard
M. Laroche

Sotheby's EST. 1744 Wine

terroir.

wine is a never-ending journey.
sothebyswine.com

AUCTION • RETAIL • ADVISORY
New York Hong Kong London

© 2018 ANDY WARHOL FOUNDATION FOR THE VISUAL ARTS / ARTISTS RIGHTS SOCIETY (ARS), NEW YORK



ANDY WARHOL. \$(4). 1982

TREASURE THE ART. UNLOCK THE VALUE.

As the art market reaches new heights, it is time to look at your art in a new light.

Sotheby's Financial Services allows you to enjoy your investment in fine art, decorative art or jewellery with renewed liquidity, capitalising on its value while maintaining ownership.

With over 25 years of experience in art lending, more than \$4 billion in loans made to date, and in-depth knowledge of the international art market, we can arrange truly bespoke financing solutions for our clients.

Comprehensive valuations from renowned specialists combined with unparalleled market expertise enable us to offer loans discreetly and with unmatched speed.

Contact us for a confidential consultation today.

Enquiries

New York +1 212 894 1130

Londres +44 (0) 207 293 6006

Hong Kong +852 2822 8188

services@sothebysfinancial.com

sothebysfinancial.com

Sotheby's EST. 1744

Financial Services

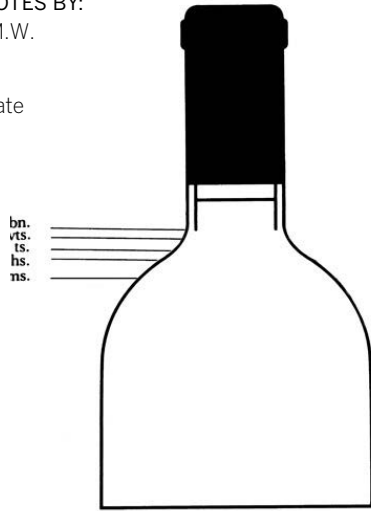
GLOSSARY OF ABBREVIATIONS

WINE TASTING NOTES BY:

Serena Sutcliffe M.W.

WINE RATING:

WA - Wine Advocate



ULLAGES (LEVEL OF WINE)

For Bordeaux, Port and other wines in bottles with defined shoulders the ullage/level is shown, if relevant, by its relevant position in the bottle. Our interpretations are as follows:

- u. - ullage/ullages (levels)
- n. - within neck; the normal level of young wines
- bn. - bottom neck; completely acceptable for any age of wine
- vts. - very top shoulder; completely acceptable for any age of wine
- ts. - top shoulder; usual level for wines over 15 years old
- hs. - high shoulder; typical reduction through the cork, usually no problem
- ms. - mid shoulder; usually some deterioration of the cork and therefore some variation

Example: (u. 3hs) means 3 bottles ullaged to high shoulder.

For Burgundy, German and other wines in bottles with sloping necks the ullage is shown

in centimetres, measured from the base of the cork.

Example: (u. 2x5cm) means 2 bottles ullaged 5 centimetres.

Fully branded cork indicates the producer, vineyard and vintage is legible on the cork.

Branded cork indicates that the cork is branded with either the producer, wine and/or vintage being legible on the cork.

Sotheby's Wine does not indicate levels under 3 cm in the necks of the bottles inspected.

Parcel is a group of lots of the same type and quantity of wine.

Sotheby's Wine does not comment on either back labels or importer labels

BOTTLE SIZES - QUANTITY OF LITERS PER BOTTLE SIZE

	BURGUNDY	BORDEAUX	CHAMPAGNE	PORT
hb(s) - half bottle(s)	0.375	0.375	0.375	0.375
imp.pt. - imperial pint	0.568	0.568	0.568	0.568
hf.ltr. - half liter	0.5	0.5	0.5	0.5
bt(s) - bottle(s)	0.75	0.75	0.75	0.75
ltr. - liter	1	1	1	1
mag. - magnum	1.5	1.5	1.5	1.5
m-j. - marie-jeanne	—	2.5	—	—
d.mag. - double magnum	—	3	—	3
jero. - jero boam	3	5*	3	—
reho. - rehoboam	—	—	4.5	—
imp. - imperial	—	6	—	—
meth. - methuselah	6	—	6	—
salm. - salmanazar	9	9	9	—
balth. - balthazar	12	12	12	—
nebu. - nebuchadnezzar	15	15	15	—
melr. - melchior	—	18	—	—

PACKING

- (oc) original carton
- (owc) original wooden case
- (sc) Sotheby's Wine/Sotheby's carton
- (cn) carton

GENERAL

- [] believed e.g. [1970] believed 1970
- cm. centimetres
- bt(s) bottle(s)

The above table is a guide to the liters of wine per bottle size. Where relevant the figures have been taken from the EEC prescribed literage for light still wine, sparkling wine and liqueur wine. The different categories have separate implementation dates which, when combined with past variances in bottling quantities of some bottle sizes, means that this should be treated purely as a guide. Should you require the literage capacity of the wine in any lot, please contact the wine department.

* up to 1978 Jeroboams were generally bottled in 4.5 liter bottles rather than 5 liter bottles.

CONDITIONS OF SALE

The following Conditions of Sale are 72nd and York Inc. ("Sotheby's Wine"), Sotheby's, Inc. ("Sotheby's") and the Consignor's entire agreement with the purchaser relative to the property listed in this catalogue.

The Conditions of Sale, the glossary, if any, and all other contents of this catalogue are subject to amendment by Sotheby's Wine and Sotheby's by the posting of notices or by oral announcements made during the sale. The property will be offered for sale by Sotheby's Wine as agent for the Consignor, unless the catalogue indicates otherwise.

By participating in any sale, you acknowledge that you are bound by these terms and conditions.

1. Except for the limited warranty contained in paragraph 2, all property is sold "AS IS" without any representations or warranties, express or implied, by Sotheby's Wine, Sotheby's or the Consignor as to merchantability, fitness for a particular purpose, the correctness of the catalogue or other description of the physical condition, size, quality, rarity, importance, medium, provenance, exhibitions, literature or historical relevance of any property and no statement anywhere, whether oral or written, whether made in the catalogue, an advertisement, a bill of sale, a salesroom posting or announcement, or elsewhere, shall be deemed such a warranty, representation or assumption of liability. Sotheby's Wine, Sotheby's and the Consignor are not responsible for errors and omissions in the catalogue, glossary, or any supplemental material. Sotheby's, Sotheby's Wine and the Consignor make no representations and warranties, express or implied, as to whether the purchaser acquires any copyrights, including but not limited to, any reproduction rights in any property.

2. If Sotheby's Wine sells any wine which the Buyer subsequently shows to Sotheby's Wine reasonable satisfaction to be "counterfeit," subject to the terms below Sotheby's Wine will set aside the sale and refund to the purchaser of record the purchase price received for such wine (the successful hammer price, plus the buyer's premium). For these purposes, "counterfeit" means a wine for which, in the reasonable opinion of Sotheby's Wine, the correct description of the producer and vintage is not reflected by the description in the BOLD and CAPITALIZED heading in the catalogue (as amended by any oral or written salesroom notices or announcements). The Guarantee is provided for a period

of twenty-one (21) days from the date of the relevant auction and is solely for the benefit of the original purchaser of record at the auction and may not be transferred to any third party.

To be able to claim under this Guarantee, the original purchaser of record must (i) notify Sotheby's Wine in writing within the 21 day period of the reasons for believing the wine to be counterfeit, specifying the lot number, date of the auction at which it was purchased and the reasons for such question; and (ii) return the lot to Sotheby's Wine at the original selling location in the same condition as at the date of sale to the original purchaser of record and be able to transfer good title to the lot, free from any third party claims arising after the date of such sale.

Sotheby's Wine in its sole discretion will decide the validity of any such claim as between the Consignor and the purchaser. It is specifically understood and agreed that the rescission of a sale and the refund of the original purchase price is exclusive and in lieu of any other remedy which might otherwise be available as a matter of law, or in equity. Neither Sotheby's Wine, Sotheby's nor the Consignor shall be liable for any incidental or consequential damages incurred or claimed, including without limitation, loss of profits or interest.

3. A buyer's premium will be added to the successful bid price of each lot and is payable by the purchaser as part of the total purchase price. The buyer's premium is 24% of the successful bid price.

4. Sotheby's Wine reserve the right to withdraw any property before or at the sale and shall have no liability whatsoever for such withdrawal. Sotheby's Wine also reserves the right to combine two or more lots.

5. Unless otherwise announced by the auctioneer, all bids are per lot as numbered in the catalogue.

6. Sotheby's Wine reserves the right to reject any bid. The highest bidder acknowledged by the auctioneer will be the purchaser. In the event of any dispute between bidders, or in the event of doubt on Sotheby's Wine part as to the validity of any bid, the auctioneer will have the final discretion to determine the successful bidder, to re-open the bidding, to cancel the sale, or to reoffer and resell the article in dispute. If any dispute arises after the sale, Sotheby's Wine sale record is conclusive. Although in its discretion Sotheby's Wine will execute order or absentee bids or accept telephone bids or online bids as a convenience to clients who are not present at

auctions, neither Sotheby's Wine nor Sotheby's are responsible for any errors or omissions in connection therewith.

By participating in the sale, you represent and warrant that any bids placed by you, or on your behalf, are not the product of any collusive or other anti-competitive agreement and are otherwise consistent with federal and state antitrust law.

7. If the auctioneer decides that any opening bid is below the reserve of the article offered, Sotheby's Wine may reject the same and withdraw the article from sale, and if, having acknowledged an opening bid, Sotheby's Wine decides that any advance thereafter is insufficient, Sotheby's Wine may reject the advance.

8. Subject to fulfilment of all of the conditions set forth herein, on the fall of the auctioneer's hammer, title to the offered lot will pass to the highest bidder acknowledged by the auctioneer, and such bidder thereupon (a) must present satisfactory legal documentation that he or she is at least 21 years of age, (b) assumes full risk and responsibility therefor, and (c) will immediately pay the full purchase price or such part as Sotheby's Wine may require. The sales price shall be exclusive of any storage or delivery charge. In addition to other remedies available to Sotheby's Wine or Sotheby's by law, they reserve the right to impose from the date of sale a late charge of the annual percentage rate of Prime + 6% of the total purchase price if payment is not made in accordance with the conditions set forth herein. All property must be removed by the purchaser at his or her expense as soon as possible following payment, and in any event not later than 45 days following its sale and, if it is not so removed, (i) a storage charge of \$10.00 per lot per month from the 46th day after the sale until its removal will be payable to Sotheby's Wine by the purchaser, (ii) if the property remains in storage for over 90 days following its sale, Sotheby's Wine may send the purchased property to a third party warehouse, for the account, risk and expense of the purchaser, and New York state and local sales tax will be charged. If any applicable conditions herein are not complied with by the purchaser, the purchaser will be in default and in addition to any and all other remedies available to Sotheby's Wine, Sotheby's or the Consignor by law, including without limitation the right to hold the purchaser liable for the total purchase price, including all fees, charges and expenses more fully set forth herein, Sotheby's Wine, at its option, may (x) cancel the sale of that, or any other lot or lots sold to the defaulting purchaser at the

same or any other auction, retaining as liquidated damages all payments made by the purchaser, or (y) resell the purchased property, whether at public auction or by private sale, or (z) effect any combination thereof. In any case, the purchaser will be liable for any deficiency, any and all costs, handling charges, late charges, expenses of both sales, Sotheby's Wine' commissions on both sales at regular rates, legal fees and expenses, collection fees and incidental damages. Sotheby's Wine may, in its sole discretion, apply any proceeds of sale then due or thereafter becoming due to the purchaser from Sotheby's Wine or Sotheby's or any affiliated company, or any payment made by the purchaser to Sotheby's Wine or Sotheby's or any affiliated company, whether or not intended to reduce the purchaser's obligations with respect to the unpaid lot or lots, to the deficiency and any other amounts due to Sotheby's Wine, Sotheby's or any affiliated companies. In addition, a defaulting purchaser will be deemed to have granted and assigned to Sotheby's Wine, Sotheby's and their affiliated companies, a continuing security interest of first priority in any property or money of or owing to such purchaser in Sotheby's Wine or Sotheby's possession, custody or control or in the possession, custody or control of any of their affiliated companies, and Sotheby's Wine and Sotheby's may retain and apply such property or money as collateral security for the obligations due to them or to any affiliated company of theirs in each case weather at the time of the auction, the default or if acquired at anytime thereafter. Sotheby's Wine and Sotheby's shall have all of the rights accorded a secured party under the New York Uniform Commercial Code. Sotheby's Wine and Sotheby's shall have all of the rights accorded a secured party under the New York Uniform Commercial Code. You hereby agree that Sotheby's Wine and Sotheby's may file financing statements under the Uniform Commercial Code without your signature where legally permissible. Payment will not be deemed to have been made in full until we have collected good funds. In the event the purchaser fails to pay any or all of the total purchase price for any lot and Sotheby's and Sotheby's Wine nonetheless elect to pay the Consignor any portion of the sale proceeds, the purchaser acknowledges that Sotheby's and Sotheby's Wine shall have all of the rights of the Consignor to pursue the purchaser for any amounts paid to the Consignor, whether at law, in equity, or under these Conditions of Sale.

9. Unless otherwise indicated, each lot in the sale is offered subject to a reserve which is the confidential minimum hammer price at which a lot will be sold. No reserve will exceed the low presale estimate stated in the catalogue, or as amended by oral or posted notices. Sotheby's Wine may implement such reserve by opening the bidding on behalf of the Consignor and may bid up to the amount of the reserve, placing successive or consecutive bids for a lot, or bids in response to other bidders. In instances where Sotheby's Wine or Sotheby's have an interest in the lot other than Sotheby's Wine's commission, they may bid up to the reserve to protect such interest. In certain instances, the Consignor may pay Sotheby's Wine less than the standard commission rate where a lot is "bought-in" to protect its reserve.

10. The purchaser shall pay any applicable state and local taxes, and any applicable compensating use tax of another state which Sotheby's Wine or Sotheby's may be required by law to collect at the time of the payment of the purchase price.

11. These Conditions of Sale, as well as the purchaser's, Sotheby's Wine and Sotheby's respective rights and obligations hereunder, shall be governed by and construed and enforced in accordance with the laws of the State of New York. By bidding at an auction, whether present in person or by agent, order bid, telephone, online or other means, the purchaser shall be deemed to have consented to the exclusive jurisdiction of the state courts of, and the federal courts sitting in, the State of New York.

12. Sotheby's Wine is not responsible for the acts or omissions in the packing or shipping of purchased lots or of other carriers or packers of purchased lots, whether or not recommended by them. Packing and handling of purchased lots is at the entire risk of the purchaser.

13. Sotheby's Wine does not ship wine via DHL, FedEx or UPS when a lot contains wine which is older than 1970 or is larger than 3 L, has an aggregate value of more than \$12,000, or when the temperatures from origin to destination are outside of the range between 40-75 °F.

14. In no event will Sotheby's Wine liability to a purchaser exceed the purchase price actually paid.

15. **Data Protection** Sotheby's will use information provided by its clients or which Sotheby's otherwise obtains relating to its clients for the provision of auction and other art-related services, real estate and insurance services, client administration, marketing and otherwise to manage and operate its business, or as required by law.

Some gathering of information about Sotheby's clients will take place using technical means to identify their preferences and provide a higher quality of service to them, and Sotheby's may gather information about its clients through video images or through the use of monitoring devices used to record telephone conversations.

Sotheby's will generally seek clients' express consent before gathering any sensitive data, unless otherwise permitted by law. Clients agree that Sotheby's may use any sensitive information that they supply to Sotheby's.

By agreeing to these Conditions of Sale, clients agree to the processing of their personal information and also to the disclosure and transfer of such information to any Sotheby's affiliate or subsidiary and to third parties anywhere in the world for the above purposes, including to countries which may provide different degrees of protection of personal information to that offered in the US. Clients can prevent the use of their personal information for marketing purposes at any time by notifying Sotheby's.

16. **Export and Import.** It is the purchaser's sole responsibility to identify and obtain any necessary export or import permits or permissions. Sotheby's Wine and the Consignor make no representations or warranties as to whether any lot is or is not subject to any export or import restrictions.

17. Due to the nature of the wine in this sale, Sotheby's Wine is unable to arrange shipment for any wine outside of Manhattan (below 125th Street) and New Jersey (within 50 mile radius from Manhattan). Wines will be available for collection by the purchaser or a third party carrier. Due to the fragile nature of old wines, Sotheby's Wine strongly recommends shipments to be palletized in climate controlled environment via truck or air. Sotheby's Wine will not be liable for any cork failure during shipment.

CONDITIONS FOR LIVE ONLINE BIDDING

The following terms and conditions (together, the "Conditions") provide important information related to live online bidding in sales conducted by 72nd and York Inc. ("Sotheby's Wine") and Sotheby's, Inc. ("Sotheby's New York"), in respect of the sales that take place in New York, by Sotheby's in London ("Sotheby's London"), in respect of the sales that take place in London, and by Sotheby's Hong Kong Limited ("Sotheby's Hong Kong"), in respect of the sales that take place in Hong Kong. These terms are in addition to Sotheby's Wine and Sotheby's New York's Conditions of Sale, in respect of the sales that take place in New York, and in respect of the sales that take place in London and Hong Kong, in addition to Sotheby's London's and Sotheby's Hong Kong's Conditions of Business for Buyers and Authenticity Guarantee, respectively, and are not intended in any way to replace them. By participating in this sale via live online bidding, you acknowledge that you are bound by these additional Conditions.

1. A live auction is by its nature fast-moving and bidding may progress very quickly. Sotheby's Wine, New York, Sotheby's London and Sotheby's Hong Kong, in relation to the sales in New York, London and Hong Kong respectively, wish to ensure that online bids are submitted as promptly as possible to ensure that online bidders are not at any disadvantage when bidding against bidders in the room and on the telephones. The procedure for placing bids is therefore a one-step process; as soon as the "Bid" button is clicked, a bid is submitted. By bidding online, you accept and agree that bids submitted in this way are final and that you will not under any circumstances be permitted to amend or retract your bid. If a successful bid is sent to Sotheby's Wine, New York, Sotheby's London or Sotheby's Hong Kong, in relation to the sales in New York, London or Hong Kong respectively, from your computer, you irrevocably agree to pay the full purchase price, including buyer's premium and all applicable taxes and other applicable charges.

2. All online bidders will be able to see the paddle numbers of other online bidders as bids are placed. Bids other than online bids will be displayed on the online bidder's computer screen as "floor" bids. "Floor" bids include those bids taken from the live auction room, telephones, and absentee bidders, as well as any bids made by the auctioneer on behalf of the consignor below the reserve. If an online bid and a "floor"

bid are placed simultaneously, the "floor" bid generally will take precedence; the auctioneer will have the final discretion to determine the successful bidder or to reopen bidding. The auctioneer's decision is final.

3. The next bidding increment is shown on your computer screen for your convenience. The auctioneer has discretion to vary bidding increments for bidders in the auction room and on the telephones, but online bidders will not be able to place a bid in an amount other than a whole bidding increment. All bidding for this sale will be in U.S. Dollars, in respect of New York sales, in Pounds Sterling, in respect of London sales, or in Hong Kong Dollars, in respect of Hong Kong sales, and online bidders will not be able to see the currency conversion board that may be displayed in the auction room.

4. The record of sale, kept by Sotheby's Wine, Sotheby's New York, Sotheby's London and Sotheby's Hong Kong, in relation to the sales in New York, London and Hong Kong respectively, will be taken as absolute and final in all disputes. In the event of a discrepancy between any online records or messages provided to you and the record of sale kept by Sotheby's Wine, Sotheby's New York, Sotheby's London and Sotheby's Hong Kong, in relation to the sales in New York, London and Hong Kong respectively, the record of sale will govern.

5. Online buyers are responsible for making themselves aware of all sale room notices and announcements. All sale room notices will be read by the auctioneer at the beginning, where appropriate, or during the sale prior to a relevant lot being offered for sale. Sotheby's Wine, Sotheby's New York, Sotheby's London and Sotheby's Hong Kong, respectively, recommend that online bidders log on at least ten minutes before the scheduled start of the auction to ensure that you have heard all announcements made by the auctioneer at the beginning of the sale.

6. Sotheby's Wine, Sotheby's New York, Sotheby's London and Sotheby's Hong Kong, respectively, reserve the right to refuse or revoke permission to bid online and to remove online bidding privileges during the sale.

7. The purchase information shown in the "My Purchases" section of the online bidding software is provided for your convenience only. Successful bidders will be notified and invoiced after the sale. In the event of any discrepancy between the online purchase information and the invoice sent to you by Sotheby's Wine, Sotheby's New York, Sotheby's London and Sotheby's Hong Kong,

respectively, following the sale in New York, London or Hong Kong, as the case may be, the invoice prevails. Terms and conditions for payment and collection of property remain the same regardless of how the winning bid was submitted.

8. Sotheby's Wine, Sotheby's New York, Sotheby's London and Sotheby's Hong Kong, respectively, offer live online bidding as a convenience to our clients. Neither Sotheby's Wine nor Sotheby's New York, in respect of the New York sale, Sotheby's London in respect of the London sales, or Sotheby's Hong Kong, in respect of the Hong Kong sales, will be responsible for any errors or failures to execute bids placed online, including, without limitation, errors or failures caused by (i) a loss of connection to the internet or to the online bidding software by either, on the one side, Sotheby's Wine and Sotheby's New York, Sotheby's London or Sotheby's Hong Kong, respectively, or, on the other side, the client; (ii) a breakdown or problems with the online bidding software; or (iii) a breakdown or problems with a client's internet connection or computer. Neither Sotheby's Wine nor Sotheby's New York, in respect of the New York sale, Sotheby's London in respect of the London sales, or Sotheby's Hong Kong, in respect of the Hong Kong sales, is responsible for any failure to execute an online bid or for any errors or omissions in connection therewith.

9. Live online bidding will be recorded.

IMPORTANT INFORMATION FOR PURCHASERS AT WINE SALES

The following will help explain some of the words and symbols commonly used throughout this catalogue. All bidders should read the Conditions of Sale in this catalogue, as well as any glossary or other notices. By bidding at auction, bidders are bound by those Conditions of Sale, as amended by any oral announcement or posted notices, which together form the contract of sale, between the successful bidder (purchaser), Sotheby's Wine, Sotheby's and the seller (consignor) of the lot. Please remember that all property is sold "AS IS" and is only subject to rescission as stated in the Conditions of Sale. If you have any questions concerning the information below or any other auction practices, please contact Connor Kriegel at +1 212 606 7050.

△ **Property in which Sotheby's Wine or Sotheby's has an Ownership Interest**

Lots with this symbol indicate that Sotheby's Wine or Sotheby's owns the lot in whole or in part or has an economic interest in the lot equivalent to an ownership interest.

D Sotheby's, its affiliates, employees, shareholders, officers and directors:

(i) do not own or operate any entity which will provide goods or services for this lot; (ii) are not liable for any negligent or willful act of such persons or entities or of any third person providing the goods or services for this lot; and (iii) are not responsible for any injury, financial or physical loss, death, inconvenience, delay or damage to personal property in connection with the provision of any goods or services for this lot.

Arrangement of Lots Wines of individual owners are grouped together, usually preceded by a general heading. There is an index at the end of the catalogue.

Parcels/Options There may be some discrepancies between the different lots in a parcel with respect to level, condition or otherwise, and each buyer should refer to the catalogue description for more detailed information. At the auctioneer's discretion, the successful bidder of the first lot in a parcel shall have the option, but not the obligation, to purchase in consecutive order one or more of the remaining lots in the parcel, each at the same successful bid price as the first lot. If any lots in the parcel are not purchased, the auctioneer will open the bidding on the next unsold lot in the parcel and the successful bidder of that lot shall have the option, but not the obligation, to purchase in consecutive order one or more, if any, of the remaining lots in the parcel, each at the newly established successful bid price.

Cataloguing of Old Wines Wines are catalogued as accurately as possible at the time of going to press including the levels. However, such levels may change between cataloguing and sales. This may be caused by the ageing of the cork or by a change in the temperature of the storage conditions or the shipment of the wine. Additionally, there is a risk of cork failure in old wines which must be taken into account by the potential purchasers. Purchasers must take into consideration the natural variations and conditions of cases, labels, ullages, corks and wines. Except as set forth in paragraph 2 of the Conditions of Sale, Sotheby's Wine is unable to accept returns.

Cautionary Notes Neither Sotheby's Wine nor Sotheby's will entertain any price negotiation or credit after the delivery is made and returns will not be accepted. Under no circumstances will substitutes be provided by Sotheby's or Sotheby's Wine; for example in case of breakage, or error of description.

Estimates A low and high estimate of the selling price exclusive of buyer's premium is printed beside the last lot in each parcel, based on the price per lot. A parcel is a group of similar lots under one bold type heading. The estimates are guides for prospective bidders and, where possible, reflect prices that similar wines have sold for in the past. The estimates are determined in advance of the sale and are therefore subject to revision to reflect current market conditions. Estimates should not be relied upon as a representation or prediction of actual selling prices. If you have any questions concerning a lot, please contact the specialists in charge of the sale whose names are printed in the front of this catalogue.

Bidding Bidding is per lot. Bidding increments are listed on the absentee bidding slip in the middle of the catalogue.

In order to bid live at an auction, you must register for a paddle when entering the salesroom. If you are the successful bidder on a lot, whether in the room, on the telephone, or online, the auctioneer will acknowledge your paddle number. Unless you have previously qualified to bid at Sotheby's, please be prepared to provide requested information to a Sotheby's representative.

Bidding will be in accordance with the lot numbers listed in the catalogue or as announced by the auctioneer, and will be in increments determined by the auctioneer. There are multiple ways in which you may bid at auction. You may bid in person by attending the auction, submit an Absentee Bid Form by letter or fax, or in certain circumstances, by telephone. For some sales, you may also be able to bid live online. If you are unable to attend the sale, please see the Absentee Bid Form and Guide for Absentee Bidders which contains additional information on absentee bidding. If you are interested in live online bidding, please contact the wine department for additional information.

Unless otherwise noted in the catalogue or by an announcement at the auction, Sotheby's Wine acts as agent on behalf of the seller and does not permit the seller to bid on his or her own property. It is important for all bidders to know that the

auctioneer may open the bidding on any lot by placing a bid on behalf of the seller and may continue bidding for the seller by placing responsive or consecutive bids, but only up to the reserve (see the next paragraph below for information regarding reserves). The auctioneer will not place consecutive bids on behalf of the seller above the reserves.

Reserves Unless otherwise indicated, all property in the sale is offered subject to a reserve. A reserve is the confidential minimum price established between Sotheby's Wine and the seller. The reserve is generally set at a percentage of the low estimate and will not exceed the low estimate of the lot. If any lots in the catalogue are offered without a reserve, such lots will be designated by the following symbol (□). If every lot in the catalogue is offered without a reserve, the Conditions of Sale will so state and this symbol will not be used for each lot.

Currency Conversion Board NY For your convenience, in many sales Sotheby's operates a display board which converts United States dollars into various foreign currencies. All foreign currency amounts displayed are approximations based on recent exchange rate information and may not be relied upon as a precise invoice amount. Sotheby's and Sotheby's Wine assume no responsibility for any error or omission in foreign or United States currency amounts shown.

Hammer Price (or Successful Bid Price) and the Buyer's Premium For lots which are sold, the last price for a lot as announced by the auctioneer is the hammer, or successful bid price. A buyer's premium will be added to the successful bid price and is payable by the purchaser as part of the total purchase price. The buyer's premium will be the amount stated in Paragraph 3 of the Conditions of Sale in this catalogue.

Liability for Loss and Damage At the fall of the hammer, all risks of loss and damage to the lot passes to the purchaser.

Non-arrival, Loss, Breakage and Shortage Loss Breakage and shortage should be notified to Sotheby's Wine in writing within three days of delivery of the property, which must be examined in the presence of the carrier on arrival. In the event of non-arrival, the purchaser must inform Sotheby's Wine in writing within 21 days of the date of the release order.

Payment for Purchased Property If you are the successful bidder on a lot, payment is to be made immediately following a sale. Sotheby's Wine will issue a Release Order once receipt of full payment has been confirmed. All delivery or pick-up inquiries should be made to Sotheby's Wine. Please contact the specialist in charge of the sale for information on a specific lot, or Post Sale Services at +1 212 606 7059, for information regarding payment.

Payment by Cash It is against Sotheby's Wine's general policy to accept single or multiple related payments in the form of cash or cash equivalents in excess of the local currency equivalent of US \$10,000. It is Sotheby's Wine's policy to request any new clients or purchasers preferring to make a cash payment to provide: verification of identity (by providing some form of government issued identification containing a photograph, such as a passport, identity card or driver's license), confirmation of permanent address and identification of the source of the funds.

Payment by Credit Cards Sotheby's Wine accepts payment by credit card for Visa, MasterCard, and American Express only. Credit card payments may not exceed \$50,000 per sale. Payment by credit card may be made (a) online at <https://www.sothebys.com/en/invoice-payment.html>, (b) by calling in to Post Sale Services at +1 212 606 7059, or (c) in person at Sotheby's premises at the address noted in the catalogue.

Payment by Check Sotheby's Wine accepts personal, certified, banker's draft and cashier's checks drawn in US Dollars (made payable to Sotheby's Wine). While personal and company checks are accepted, property will not be released until such checks have cleared, unless you have a pre-arranged check acceptance agreement. Application for check clearance can be made through the Post Sale Services.

Certified checks, banker's drafts and cashier's checks are accepted at Sotheby's Wine discretion and provided they are issued by a reputable financial institution governed by anti-money laundering laws. Instruments not meeting these requirements will be treated as "cash equivalents" and subject to the constraints noted in the prior paragraph titled "Payment By Cash".

Payment by Wire Transfer
To pay for purchase as wire transfer, please refer to the payment instructions on the invoice provided by Sotheby's Wine or contact Post Sale Services at +1 212 606 7059.

INFORMATION ON SALES AND USE TAX RELATED TO PURCHASES AT AUCTION

To better assist our clients, we have prepared the following information on Sales and Use Tax related to property purchased at auction.

Why Sotheby's Collects Sales Tax

Virtually all State Sales Tax Laws require a corporation to register with the State's Tax Authorities and collect and remit sales tax if the corporation maintains a presence within the state, such as offices. In the states that impose sales tax, Tax Laws require an auction house, with a presence in the state, to register as a sales tax collector, and remit sales tax collected to the state. New York sales tax is charged on the hammer price, buyer's premium and any other applicable charges on any property picked up or delivered in New York, regardless of the state or country in which the purchaser resides or does business.

Where Sotheby's Collects Sales Tax

Sotheby's is currently registered to collect sales tax in the following states: California, Colorado, Connecticut, Florida, Georgia, Hawaii, Illinois, Kentucky, Maryland, Massachusetts, Minnesota, Missouri, New Jersey, New York, Ohio, Oklahoma, Pennsylvania, Rhode Island, Texas, Vermont and Washington. For any property collected or received by the purchaser in New York City, such property is subject to sales tax at the existing New York State and City rate of 8.875%

Sotheby's Arranged Shipping

If the property is delivered into any state in which Sotheby's is registered, Sotheby's is required by law to collect and remit the appropriate sales tax in effect in the state where the property is delivered.

Client Arranged Shipping Property collected from Sotheby's New York premises by a common carrier hired by the purchaser for delivery at an address outside of New York is not subject to New York Sales Tax, but if the property is delivered into any state in which Sotheby's is registered,

Sotheby's is required by law to collect and remit the appropriate sales tax in effect in the state where the property is delivered. New York State recognizes shippers such as the United States Postal Service, United Parcel Service, FedEx, or the like as "common carriers". If a purchaser hires a shipper other than a common carrier to pick up property, Sotheby's will collect New York sales tax at a rate of 8.875% regardless of the ultimate destination of the goods. If a purchaser utilizes a freight-forwarder who is registered with the Transportation Security Administration ("TSA") to deliver property outside of the United States, no sales tax would be due on this transaction.

Where Sotheby's is Not Required to Collect Sales Tax

Sotheby's is not required to collect sales tax on property delivered to states other than those listed above. If the property is delivered to a state where Sotheby's is not required to collect sales tax, it is the responsibility of the purchaser to self-assess any sales or use tax and remit it to taxing authorities in that state.

Sotheby's is not required to collect sales tax for property delivered to the purchaser outside of the United States.

Restoration and Other Services

Regardless of where the property is subsequently transported, if any framing or restoration services are performed on the property in New York, it is considered to be a delivery of the property to the purchaser in New York, and Sotheby's will be required to collect the 8.875% New York sales tax.

Certain Exemptions

Most states that impose sales taxes allow for specified exemptions to the tax. For example, a registered re-seller such as a registered art dealer may purchase without incurring a tax liability, and Sotheby's is not required to collect sales tax from such re-seller. The art dealer, when re-selling the property, may be required to charge sales tax to its client, or the client may be required to self-assess sales or use tax upon acquiring the property.

Local Tax Advisors As sales tax laws vary from state to state, Sotheby's recommends that clients with questions regarding the application of sales or use taxes to property purchased at auction seek tax advice from their local tax advisors.

GUIDE FOR ABSENTEE BIDS

Absentee Bids If you are unable to attend an auction in person, and wish to place bids, you may give Sotheby's Bid Department instructions to bid on your behalf. Our representatives will then try to purchase the lot or lots of your choice for the lowest price possible, and never for more than the top amount you indicate. This service is free and confidential. Please note: Sotheby's offers this service as a convenience to clients who are unable to attend the sale, and although we will make every effort, Sotheby's will not be responsible for error or failure to execute bids.

Placing Absentee Bids To place bids, please use the absentee bid form provided in this catalogue. Be sure to accurately record the lot numbers and descriptions and the top price you are willing to pay for each lot. "Buy" or unlimited bids will not be accepted. Always indicate a "top limit"—the amount to which you would bid if you were attending the auction yourself.

Alternative bids should be indicated by using the word "OR" between lot numbers. Then if your bid on an early lot is successful, we will not continue to bid on other lots for you. Or, if your early bids are unsuccessful, we will continue to execute bids for alternative lots until a bid is successful. Bids must always be placed in the same order as the lot numbers appear in the catalogue.

Each absentee bid form should contain bids for one sale only; the number and code name should appear in the top right-hand corner of the form. Please place your bids as early as possible. In the event of identical bids, the earliest received will take precedence.

Telephone Bids Bids may be placed by telephone, but are accepted only in Sotheby's discretion and at the caller's risk. In Sotheby's discretion, telephone bids may be recorded. By bidding on the telephone, prospective purchasers consent thereto.

Telephone bid requests should be received 24 hours prior to the sale. This service is offered for lots with a low estimate of \$5,000 and above.

Buyer's Premium The "top limit" you indicate on your bid form is for the hammer price only. Please keep in mind that a buyer's premium will be added to the successful bid price of each lot you buy and is payable by you, together with the applicable sales tax which is applied to the total cost of your purchase (the total cost includes the buyer's premium). The buyer's premium will be the amount stated in paragraph 3 of the Conditions of Sale in the front of this catalogue.

Successful Bids In the event that you are successful, payment is due immediately after the sale unless otherwise agreed in advance. Payment may be made by bank transfer, credit card, check or cash (up to US\$10,000). You will be sent full details on how to pay with your invoice.

Successful bidders will be notified and invoiced within a few days of the sale. All bidders will receive a list of sale results if they purchased the sale catalogue or enclose a stamped self-addressed envelope with their absentee bid form.

For more information

To place telephone bids, or for further information, please call Jamie Durkin at +1 212 606 7414, or the regional office in your area.

EXAMPLE OF HOW TO USE THE ABSENTEE BID FORM

You wish to purchase 1 dozen bottles of Château X 1986. Five cases are available, offered in a parcel from lots 1 through to 5.

If you are bidding on a wine which is not part of a parcel, simply enter the lot number and your bid price

CHÂTEAU X 1986
 Pauillac. 1er Cru Classé

1 12 bts. (owc)
 2 12 bts. (owc)
 3 12 bts. (owc)
 4 12 bts. (owc)
 5 12 bts. (owc)

per lot: \$500-600

LOT NOS.	NO. OF LOTS REQUIRED	\$ BID PRICE (excluding premium)
1-5	1	\$Your maximum bid price

Photography:
 Colin Beale

SHIPPING / COLLECTION / STORAGE FORM

Important

Shipments and collections will only be arranged after this form has been received by Sotheby's Wine from the buyer and release documents have been issued. Please allow 3-5 business days following the receipt of these documents to prepare your order.

For Clients Arranging Collection

Buyers acknowledge that they are responsible for arranging collection of their purchases from Sotheby's Wine. Buyers understand that they are the owner and shipper of record and any claims for damage or loss in shipment, for whatever cause, are between the buyer and the carrier they have selected. All outstanding invoices must be prepaid. By signing the form buyers authorize that all charges related to their collection may be applied to their credit card and that they accept the conditions as outlined in the Conditions of Sale, acknowledgements and Location, Storage and Delivery of Wine section of the catalogue.

Please Note:

1) Depending on destination and individual state regulations, certain methods of delivery are not possible. If your requested delivery option is not available, Sotheby's Wine will contact you.

2) Buyer acknowledges that title passes at the fall of the hammer, as set forth in Paragraph 8 of the Conditions of Sale, subject to fulfillment of all the conditions set forth therein.

3) Buyer acknowledges and agrees to be responsible for all applicable excise, use and sales taxes related to the purchase of these wines.

4) Property will not be released to the shipper until all applicable taxes, permits, licenses and storage fees have been received.

5) The buyer authorizes Sotheby's Wine to choose a common carrier on behalf of the purchaser which will act as the purchaser's agent.

6) Most states regulate the shipment of wine into their state. We urge you to investigate your state's regulations before shipping or arranging to ship wine to your state. Buyer acknowledges that he/she is responsible for complying with such state laws.

7) Buyer warrants that he/she is at least 21 years of age. Buyer shall be responsible for the shipment of these wines being received by a person at least 21 years of age or over.

8) All sales of spirits or liquor must be collected by the purchaser or the purchaser's agent from our premises, as Sotheby's Wine does not ship spirits or liquor out of New York State. However, we can arrange shipments of spirits and liquor within New York State. Additionally, New York State sales tax is payable on the purchase price.

All shipments and collections must be prepaid. By signing, buyers authorize that all charges for their delivery may be applied to their credit card and that they accept the conditions as outlined in the Conditions of Sale, all acknowledgements on this page and Location, Storage and Delivery of Wine section of the catalogue.

NOTE: Neither Sotheby's nor Sotheby's Wine is responsible for any acts or omission of any shipper, including, without limitation, any packing, shipping, delivery or insurance for purchased lots. All enquiries relating to delivery should be directed to Gabriela Bonilla at +1 212 606 7059.

LOCATION, STORAGE AND DELIVERY OF WINES

General Delivery Once payment has been received by Sotheby's Wine and the Release Form has been issued, the wines may be delivered according to the instructions provided by the purchaser on the Sotheby's Wine Delivery and Collection Instructions Form. Shipment of wine poses inherent risk of damage, particularly of older wines, and risk of damage or loss in transit are at the sole risk of the purchaser.

Please note that Sotheby's Wine does not ship wine to purchasers. On behalf of the purchaser, Sotheby's Wine will arrange shipping or schedule a collection, subject to applicable law. Sotheby's Wine will assess a repacking fee of \$15.00 per case (or part case) of 750ml bottles. All shipping and insurance costs and expenses must be pre-paid. Service charges on shipments will not exceed 10%. A lot or invoice can only be delivered to one address (it is not possible to split a lot or invoice for delivery to more than one address).

Delivery within the United States

Please be advised that most states regulate the shipment of wine into their state. We urge you to investigate your state's regulations before bidding or arranging for shipment of wine into your state. Bidders are also reminded that various states impose limitations on the quantity of alcoholic beverages which may be purchased and brought into its jurisdiction by a purchaser from another state. Certain states do not permit any direct shipments of alcoholic beverages while other states require the purchaser, a consignor, shipper or other entity to possess certain licenses or permits. Neither Sotheby's nor Sotheby's Wine shall as a condition to sale assume any obligation nor bear any responsibility whatsoever for applying for or obtaining any permits or licenses. Therefore, all bidders are strongly advised to investigate the specific requirements to determine the manner in which alcoholic beverages shall be brought into their state so as to comply with all local regulations. Sotheby's Wine and Sotheby's make no representation to the legal rights of anyone to ship or import alcoholic beverages into any state. Wines may be sold and delivered only to persons who are 21 years old.

Sotheby's Wine is not responsible for any damage or loss in shipping. For all wines that are collected from Sotheby's Wine, all lots are sold in New York State and title passes to the buyer in New York State. All sales are subject to applicable taxes.

Delivery for all lots in the United States, purchasers will be charged a non-refundable property management fee

at a rate of 1% of the purchase price for all domestic shipments arranged on a Sotheby's Wine account. Such fee covers property handling, property administration, and bearing liability for loss or damage to Property in our possession. **We urge you to note that Sotheby's and Sotheby's Wine will only be liable for breakage or loss during transit. All packages must be inspected upon receipt and breakage or loss reported to Sotheby's Wine immediately upon delivery of the property.** Sotheby's Wine will not refund any shipping charges, packing charges, or fees.

Shipping to Hong Kong Sotheby's Wine is delighted to offer bi-annual shipping to Hong Kong in January and July based on the following arrangements:

- All invoices must be paid and complete delivery instructions, including final destination, must be received by December 16th and June 16th.
- Wines will be shipped by dedicated temperature controlled ocean container to Crown Wine Cellars
- The shipments will leave the United States in January and July and wines will arrive at Crown Wine Cellars in March and August. Please note these dates are subject to change and Sotheby's Wine will not guarantee arrival dates.
- Sotheby's Wine will not be responsible for local delivery costs which must be paid directly to Crown Wine Cellars
- Please note you may not ship partial invoices
- For more information contact Gabriela Bonilla at Winepostsaleservices.ny@sothebys.com / +1 212 606 7059

Delivery outside of the United States

Sotheby's Wine will assist you in making arrangements for delivery of purchases outside of the United States, although Sotheby's Wine shall not have any liability or responsibility for providing this information. The purchaser will be responsible for shipping and insurance expenses and obtaining appropriate licenses to import or export wines. If you have any questions or wish further information, please contact Gabriela Bonilla at +1 212 606 7059.

Storage Complimentary storage for wine purchased in this sale will be available at the warehouse for a period of 45 days following the auction. Beyond this point, Sotheby's Wine will assess storage charges as outlined in paragraph 8 of the Conditions of Sale. Long term, temperature and humidity controlled storage for your wines can be arranged through Western Carriers. Please call Gabriela Bonilla at +1 212 606 7059, for current rates.

NOTE: Neither Sotheby's nor Sotheby's Wine is responsible for any acts or omission of any shipper, including, without limitation, any packing, shipping, delivery or insurance for purchased lots. All enquiries relating to delivery should be directed to Gabriela Bonilla at +1 212 606 7059 .

SHIPPING / COLLECTION / STORAGE FORM

PLEASE COMPLETE ONE OF THE FOLLOWING SECTIONS THEN FAX TO Gabriela Bonilla at +1 212 606 7059

SECTION 1 - TO ARRANGE SHIPPING OF YOUR WINE (See list of states Sotheby's Wine can ship to)

SECTION 2 - TO ARRANGE COLLECTION OR STORAGE OF YOUR WINES

SECTION 3 - PAYMENT INFORMATION

YOUR INFORMATION (REQUIRED FOR ALL OPTIONS):

NAME SALE NO./DATE
ADDRESS
CITY STATE ZIP
TELEPHONE FAX EMAIL

PLEASE USE THESE INSTRUCTIONS FOR: [] ALL FUTURE SALES [] THIS SALE ONLY
IF APPLICABLE, DO YOU WISH YOUR WOODEN CASES SHIPPED TO YOU SEPARATELY FOR A FEE? [] YES [] NO
(WOODEN CASES WILL AUTOMATICALLY BE SHIPPED AT BUYER'S EXPENSE IF NO INDICATION IS GIVEN)

SECTION 1 - SHIPPING

- [] DELIVERY FOR MANHATTAN SOUTH OF 125TH STREET (\$35 + TAX FOR THE FIRST CASE + \$10 + TAX PER ADDITIONAL CASE) AND NEW JERSEY WITHIN 50 MILE RADIUS FROM MANHATTAN (\$50 + TAX FOR THE FIRST CASE + \$15 + TAX PER ADDITIONAL CASE)
[] 2 DAY AIR OR OVERNIGHT FREIGHT SERVICE (APPROXIMATELY \$85/115 PER CASE + \$15 PER CASE REPACKING FEE) WHERE AVAILABLE
[] 3-5 DAY GROUND SERVICE (APPROXIMATELY \$55 PER CASE + \$15 PER CASE REPACKING FEE) WHERE AVAILABLE
[] REFRIGERATED TRUCK, (MINIMUM \$750)
[] SHIP ON CONTAINER TO HONG KONG

ALL DOMESTIC SHIPMENTS OUTSIDE MANHATTAN ARE SUBJECT TO A 1% PROPERTY MANAGEMENT FEE

SHIPPING ADDRESS:

[] CHECK HERE IF SHIPPING ADDRESS IS SAME AS ABOVE

NAME COMPANY
ADDRESS
CITY STATE ZIP
TELEPHONE FAX

SECTION 2 - COLLECTION OR STORAGE

- [] COLLECTION FROM SOTHEBY'S WINE WAREHOUSE Please call Gabriela Bonilla at +1 212 606 7059 to arrange a collection time. An appointment is required for all collections.
[] LONG TERM STORAGE Please continue to Section 3 for payment information (New York sales tax will be applied to your invoice).

AUTHORIZED SIGNATURE REQUIRED: DATE

By signing above, you agree to the terms as described on page 2 of the shipping / collection / storage form



1334 York Avenue, Suite 190, New York, NY 10021



SOCIÉTÉ CIVILE DU DOMAINE DE LA ROMANÉE-CONTÉE PROPRIÉTAIRE À VOSNE-ROMANÉE (CÔTE D'OR)

RICHEBOURG

APPELLATION . RICHESBOURG . CONTRÔLÉ

ANNÉE 1952

BOARD OF DIRECTORS

Domenico De Sole
Chairman of the Board

The Duke of Devonshire
Deputy Chairman of the Board

Tad Smith
**President and
Chief Executive Officer**

Jessica Bibliowicz
Linus W. L. Cheung
Kevin Conroy
Daniel S. Loeb
Olivier Reza
Marsha E. Simms
Diana L. Taylor
Dennis M. Weibling
Harry J. Wilson

**SOTHEBY'S
EXECUTIVE MANAGEMENT**

Jill Bright
**Human Resources
& Administration
Worldwide**

Amy Cappellazzo
**Chairman
Fine Art Division**

Valentino D. Carlotti
**Business Development
Worldwide**

Kevin Ching
**Chief Executive Officer
Asia**

Adam Chinn
**Chief Operating Officer
Worldwide**

Lauren Gioia
**Communications
Worldwide**

David Goodman
**Digital Development
& Marketing
Worldwide**

Mike Goss
Chief Financial Officer

Jane Levine
**Chief Compliance Counsel
Worldwide**

Laurence Nicolas
**Global Managing Director
Jewelry & Watches**

Jonathan Olsoff
**General Counsel
Worldwide**

Jan Prasens
**Managing Director
Europe, Middle East, Russia,
India and Africa**

Allan Schwartzman
**Chairman
Fine Art Division**

**SOTHEBY'S INTERNATIONAL
COUNCIL**

Robin Woodhead
**Chairman
Sotheby's International**

Jean Fritts
Deputy Chairman

John Marion
Honorary Chairman

Juan Abelló
Judy Hart Angelo
Anna Catharina Astrup
Nicolas Berggruen
Philippe Bertherat
Lavinia Borromeo
Dr. Alice Y.T. Cheng
Laura M. Cha
Halit Cingilloğlu
Jasper Conran
Henry Cornell
Quinten Dreesmann
Ulla Dreyfus-Best
Jean Marc Etlin
Tania Fares
Comte Serge de Ganay
Ann Getty
Yassmin Ghandehari
Charles de Gunzburg
Ronnie F. Heyman
Shalini Hinduja
Pansy Ho
Prince Aryn Aga Khan
Catherine Lagrange
Edward Lee
Jean-Claude Marian
Batia Ofer
Georg von Opel
Marchesa Laudomia Pucci Castellano
David Ross
Patrizia Memmo Ruspoli
Rolf Sachs
René H. Scharf
Biggi Schuler-Voith
Judith Taubman
Olivier Widmaier Picasso
The Hon. Hilary M. Weston,
CM, CVO, OOnt

CHAIRMAN'S OFFICE

AMERICAS

Lisa Dennison
Benjamin Doller
George Wachter
Thomas Bompard
Lulu Creel
August Uribe

EUROPE

Oliver Barker
Helena Newman
Mario Tavella
Dr. Philipp Herzog von Württemberg
David Bennett
Lord Dalmeny
Claudia Dwek
Edward Gibbs
Caroline Lang
Lord Poltimore

ASIA

Patti Wong
Nicolas Chow
Quek Chin Yeow

Sotheby's EST. 1744

Collectors gather here.